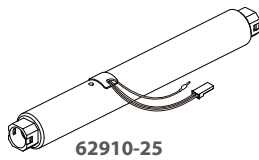


# 62910-25

## RBS Tubular Motor Specification Lithium Battery Powered

**T** Tubular motor, lithium battery  
Technical support



62910-25

One motor can store a maximum of 20 channels.

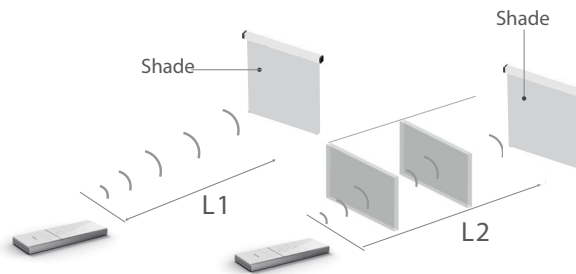


- ① Please set the limit position before use.
- ② When in the group control mode, you cannot set-up, delete program or set limits.

**T** Control range  
Technical support



Environment will effect transmitting distance



	L1 open	L2 partition	Emission frequency
12V	656 ft	115 ft	433.92/868 MHz

**T** Remote control  
Technical support



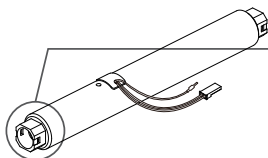
DC1602  
15-channel  
emitter

**T** Button specification  
Technical support

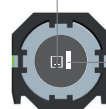


Press the set button on limit head once, the motor will pull upward. Press the set button on limit head once, the motor will stop. Press the set button on limit head again, the motor will run downward. Hold the set button on limit head for more than 6 seconds, the motor will run for hint. Release it, then motor direction has been changed with the same limits as before. Hold the set button on limit head for more than 11 seconds, the motor will run for hint. Release it, then it will delete memory and restore the factory settings.

E: Electronic  
Electronic limit + Built-in receiver



Power connector



The program button

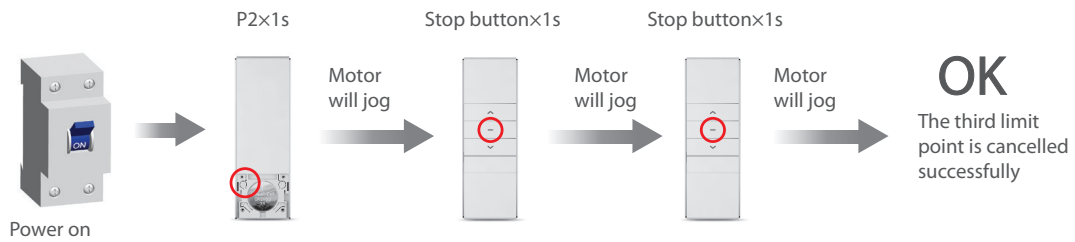
Up  
Stop  
Down



Setting button (P2)

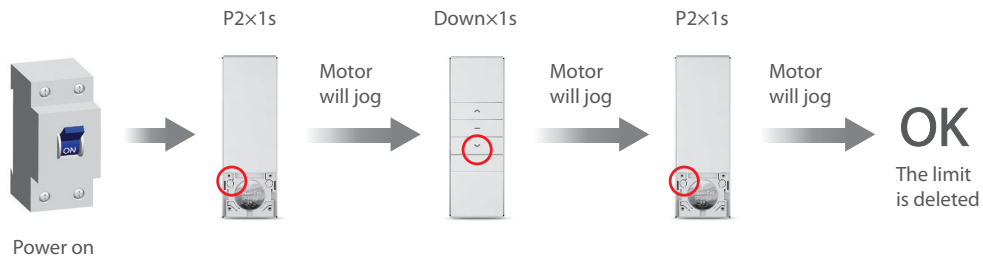


## The third limit position cancelled



# 1

## Delete limit

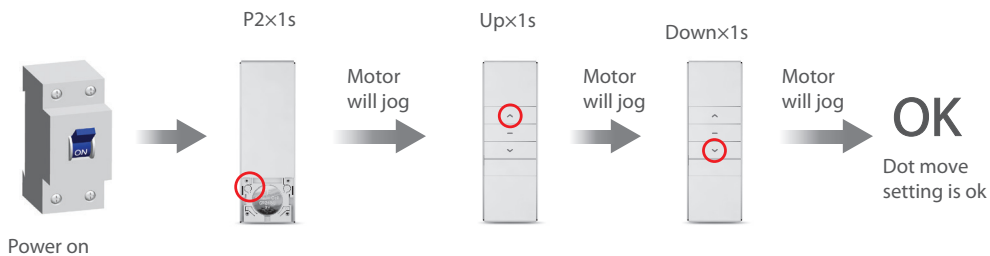


# 2

## Dot-move setting



Repeat setting, function is cancelled

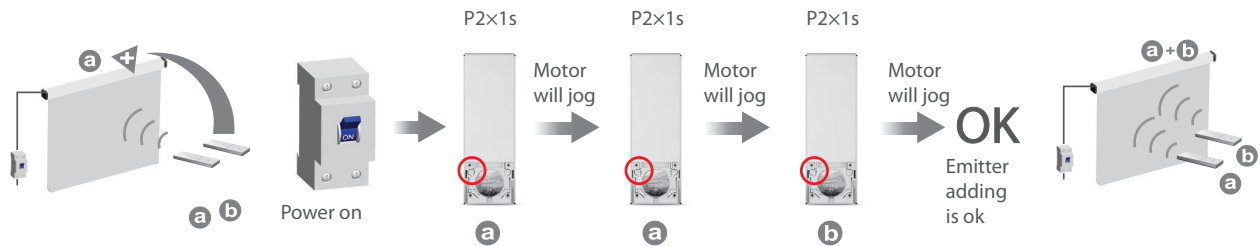


# 3

## Add remote



Remote a is the one already programmed, while remote b is not

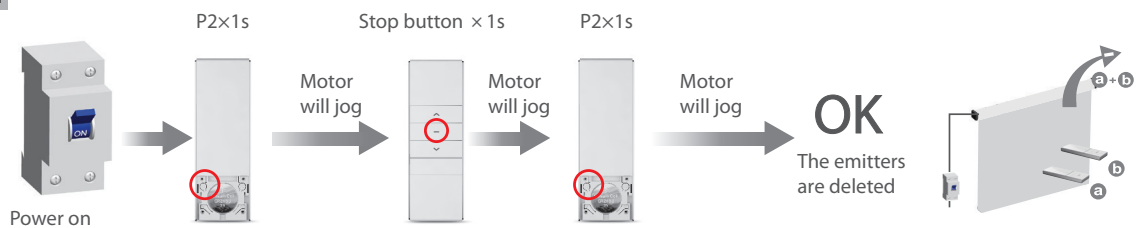


# 4

## Delete remote



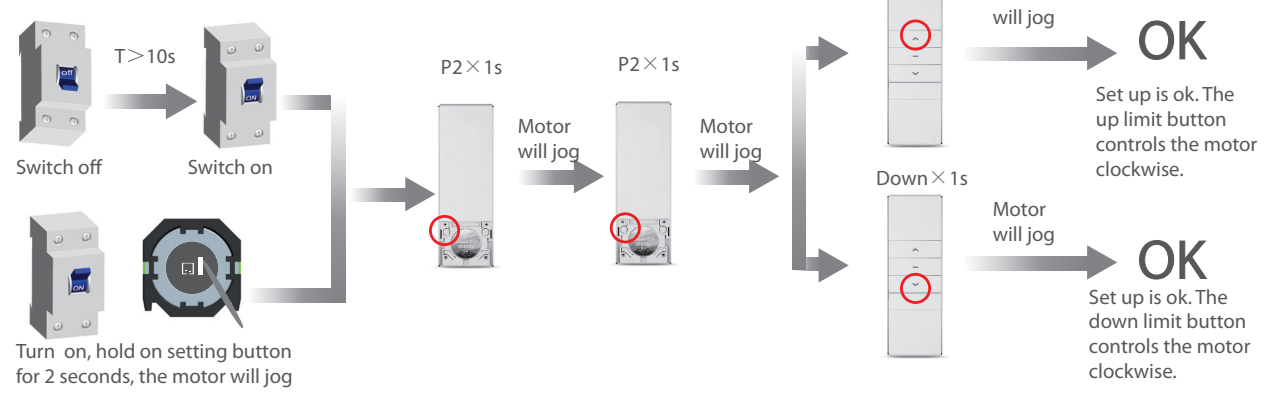
To clean up the remote means deleting all the memory of remote and limit switch in the motor receivers



# 5 Setting up

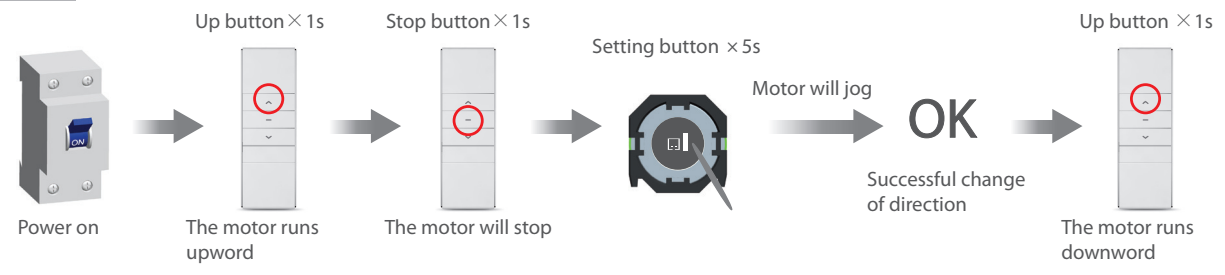
During the settings, the time between the two operations must be shorter than 10 secs, otherwise motor will exit the setting.

**!** If the motor already has a match code set, the memory will be cleared if set again



# 6 The reverse of direction setting

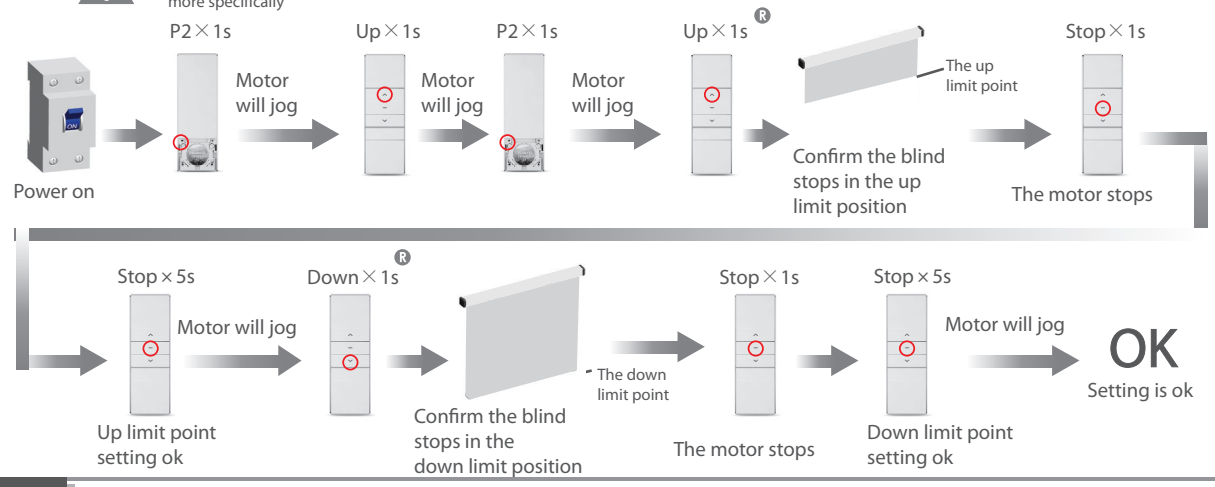
**!** Repeat the reverse of direction setting operation, the direction of motor can be reverted in a loop



# 7 Set up / down limit position

**!** ① Set up is invalid when the up limit and down limit are at the same location  
② Must complete the down limit point to limit set;

**R** ① In the process of adjusting the up / down limit: when the motor is moving up or down, press the setting button once, the motor will be under the step-moving status, press the setting button again to quit the step-moving status  
② The step-moving status: the motor will run up or down by the way of step-moving so that the limit position can be adjusted more specifically



# 8 The third limit position setting

**!** ① After the up limit and down limit setting, you can set the third limit point between them as the half open position  
② The third limit point will be cancelled as the cancellation of limit and code matching

