



CHAIN  
CONTROL



MOTOR  
CONTROL

## APOLLO COLLECTION Roller Shades

APOLLO CASSETTE MOUNT Roller Shades  
APOLLO DIRECT MOUNT Roller Shades

THE WORLD  
BEHIND  
YOUR  
DRAPERIES



# APOLLO COLLECTION ROLLER SHADES



Scan for more information on FOREST Apollo Basic Roller Shades



25 White



25 White

## APOLLO CASSETTE & DIRECT MOUNT

- Wall or ceiling mount for residential or contract use
- Maximum weight is 8 lbs. 13 oz.
- 1 1/2" / 38mm tube and a bi-directional clutch

### CASSETTE MOUNT ASSEMBLED SYSTEM




Includes stock fabric (see pages 33-34 for all fabric options), 38mm tube, roller mechanisms, brackets, bracket covers, valance, bottom rail with end caps, and child safety device.



### DIRECT MOUNT ASSEMBLED SYSTEM

Includes stock fabric (see pages 33-34 for all fabric options), 38mm tube, roller mechanisms, brackets, bracket covers, bottom rail with end caps, and child safety device.




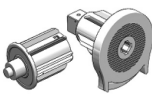
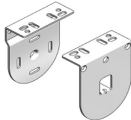





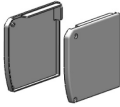


## MOTORIZED CASSETTE OR DIRECT MOUNT

Choose a cassette or direct mount shade above, add the motor, the charging cable and choice of control device from below. Maximum recommended weight is 16 lbs. per shade.

COMPONENT	
<ul style="list-style-type: none"> <li>• <i>COMING SOON!</i></li> </ul>  <p>22 3/4"</p>	<p><b>68002-25</b> 1.8 Nm Tubular Lithium iOn Motor, 3-year warranty Use with Forest controls</p>
<ul style="list-style-type: none"> <li>• </li> </ul>	<p><b>78005-25</b> Charging Cable for 68002-25</p>
<ul style="list-style-type: none"> <li>• </li> </ul>	<p><b>52931-25D</b> white <b>59D</b> black Diamond Sense Remote RF, 15 channel w/ holder, range 98'</p>

COMPONENT	
<ul style="list-style-type: none"> <li>• </li> </ul>	<p><b>52933-25</b> white <b>59</b> black Diamond Sense Wall Switch 2 channel Use with 68002-25</p>
<ul style="list-style-type: none"> <li>• <i>COMING SOON!</i></li> </ul> 	<p><b>52960-25</b> white <b>59</b> black EasyTouch Remote RF, 6 channel Use with 68002-25</p>

# APOLLO COLLECTION ROLLER SHADES

CASSETTE	DIRECT	COMPONENT	CASSETTE	DIRECT	COMPONENT
•	•	 <b>71119-90</b> 1 1/2" / 38mm 19' Tube, aluminum	•	•	 Endless Chain 25 white plastic or 90 nickel <b>49020-25, 90, 29"</b> <b>49021-25, 90, 39"</b> <b>49022-25, 90, 49"</b> <b>49023-25, 90, 59"</b> <b>49024-25, 90, 69"</b> <b>49025-25, 90, 79"</b> <b>49026-25, 90, 89"</b> <b>49027-25, 90, 99"</b>
•	•	 <b>72311-25</b> Hold Down Strip with adhesive for tube 2,000 ft/roll	•	•	<b>79005-00</b> Clear Ball Stopper
•	•	 <b>72309HD-25</b> Heavy Duty Clutch w/ end plug	•	•	<b>49501-00</b> Tension Device, child safety
•	•	 <b>72306-25</b> Multi-Purpose Bracket steel, 2 pcs	•	•	<b>810219-25</b> Bottom Rail
•	•	 <b>72304-25</b> Bracket Cover	•	•	<b>810001-25</b> Weight Insert for bottom rail
•	•	 <b>72307-90</b> Wall Bracket steel	•	•	<b>810019-25</b> Adhesive Tape for bottom rail
•	•	 <b>72308-90</b> Ceiling Bracket steel	•	•	<b>830004-25</b> End Cap for bottom rail
•	•	 <b>71312-25</b> Cassette Headrail, 13'	•	•	<b>810000-00</b> Brush for bottom rail
•	•	 <b>79001-25</b> Screw, 2 needed per headrail	•	•	<b>2 Piece Outside Mount Side Channel</b> <b>71619-25 Bottom</b> <b>71719-25 Top</b>
•	•	 <b>72314-25</b> Cassette Bracket Covers	•	•	<b>810119-25</b> One Piece Inside Mount Side Channel, 19'
•	•	 <b>79001-25</b> Screw, 6 needed per set of 2 bracket covers	•	•	<b>79002-25</b> Brush for side channel
•	•	 <b>71412-25</b> Cassette Valance, 13' aluminum, white			

• Standard item in assembled sets.

# FOREST IN STOCK FABRICS

## STOCK ROLLER SHADE FABRICS

**OUR STOCK ROLLER SHADE FABRIC PROGRAM** is designed to offer you design trends in each of three categories - screens, light filtering, and blackout. We believe you will find a color and performance factor to meet your needs within this offering. Fabrics were also selected to work together in a single color palette when you need to pair a screen or light filtering fabric with a blackout. This is helpful when using a double roller shade system or when a single room has a variety of shading requirements.

All fabrics are suitable for any of our roller shade systems.

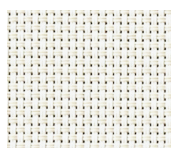
Fabric images are a close representation, but for best results please email [sales@forestdh.com](mailto:sales@forestdh.com) to order a swatch card.



### SCREENS

With two openness factors, 3% and 5%, our screen collection offers the ideal solution for all needs in terms of heat and/or light management. Screen fabrics are made of high-quality polyester yarns for strength and durability.

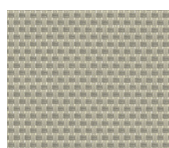
**Flame retardant - 118 in. wide**



**WHITE**  
74002-99



**WHITE CREAM**  
74004-97



**BEIGE CREAM**  
74020-81



**WHITE GREY**  
74002-18



**BLACK GREY**  
74003-55



**BLACK**  
74002-59

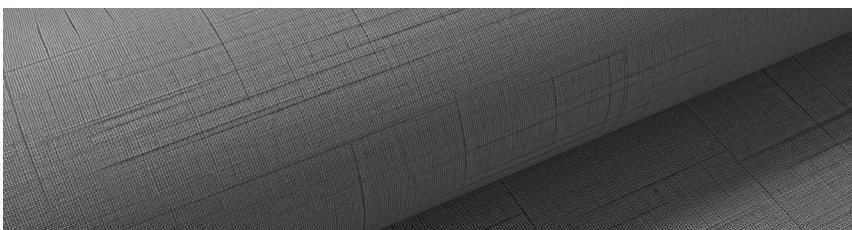
# FOREST IN STOCK FABRICS



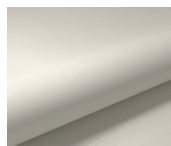
## LIGHT FILTERING

Our light filtering collection offers transparent fabric that filters the light in a delicate way. The inspired fabric is available in a range of timeless colors.

**Flame retardant - 94 in. wide**



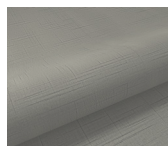
**WHITE**  
75001-04



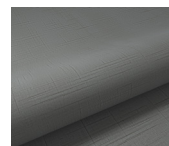
**CREAM**  
75001-16



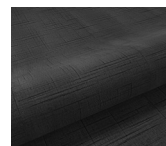
**SAND**  
75001-17



**MIST**  
75001-18



**SLATE**  
75001-19



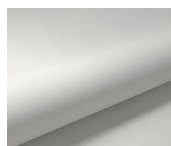
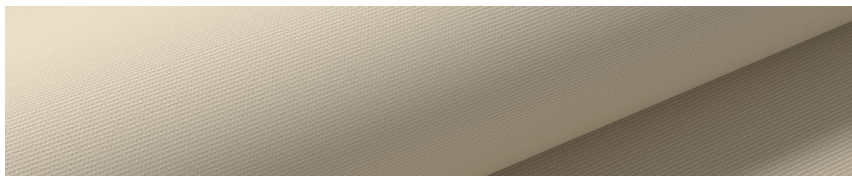
**BLACK**  
75001-20



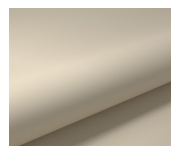
## BLACKOUT

Our blackout fabric has a flocked backing which gives the back side of the fabric a soft textile appeal. With this fabric the room is completely darkened.

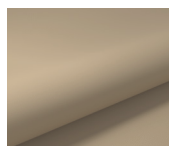
**Flame retardant - 110 in. wide**



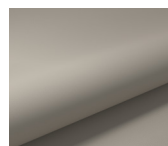
**WHITE**  
75002-04



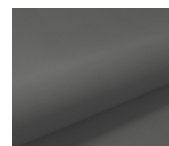
**CREAM**  
75002-16



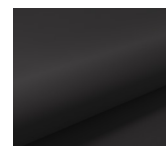
**SAND**  
75002-17



**MIST**  
75002-18



**SLATE**  
75002-19



**BLACK**  
75002-20