

STUTTGART RECTANGULAR RAIL COLLECTION INSTALL INSTRUCTIONS

BY SIMPLY FOLLOWING THESE STEP-BY-STEP INSTRUCTIONS, YOU WILL SOON BE ENJOYING YOUR NEW DRAPERY HARDWARE.

Getting Started:

Please read through all instructions carefully before you begin installation.

Unpack all materials making sure all components are included:

- Rail
- Carriers
- Bracket with Allen key
- Finials

Please note that your brackets must be securely attached to the mounting surface. If your screws do not hit wood studs you'll have to use a different fastener, which can be found at any local hardware store.

Tools You Will Need:

- Drill with a 1/8" bit and a Phillips bit
- Phillips screwdriver
- Metal tape measure

Installing Your Rectangular Rail System:

You are now ready to install your drapery hardware.

Wall Mount:

- 1. Measure**
Rails are pre-cut to your specified size.
- 2. Mark**
Mark the height you would like the top of drapery rail to be installed. Note: see measurements on the following page.
- 3. Mount**
Attach your back plates to your desired area. Drill screws through holes for a secure mount. Repeat this process for all other brackets.
- 4. Attach Bracket**
 - a. Place decorative faceplate over the back plate.
 - b. Screw the bracket attachment shaft onto the threaded part of the back plate.
- 5. Insert Rail**
Insert rail into slot on bracket with the trapezoid nut inserted in top channel. Tighten screw with Allen key to hold in place.

Ceiling Mount:

- 1. Measure**
Rails are pre-cut to your specified size.
- 2. Mark**
Mark the location you would like the top of drapery rail to be installed. Note: see measurements on the following page.
- 3. Attach Bracket**
Remove the nut and brass insert. Attach your base to your desired area. Replace brass piece and nut. Repeat this process for all other brackets.
- 5. Attach Rail**
Place nut in top rail channel and tighten set screw with Allen key to hold rail in place.



B11473-50-XX / B11473-80-XX
Ceiling/Invisible Wall Bracket



B11570-80-XX
Single Wall Bracket
Also comes in Double B11570-2-190-XX



B11592-00
Ceiling Bracket



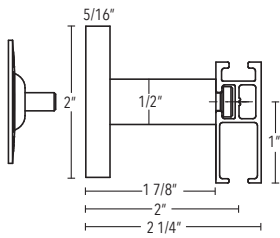
B11473-15-XX
Flush Ceiling Bracket

STUTTGART RECTANGULAR RAIL COLLECTION INSTALL INSTRUCTIONS

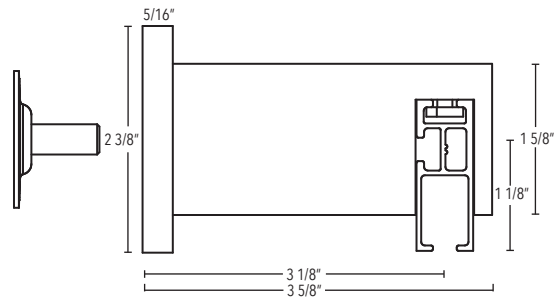
CONTINUED

Wall Brackets:

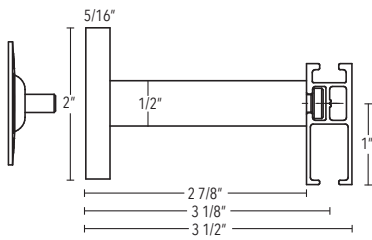
B11473-50-XX



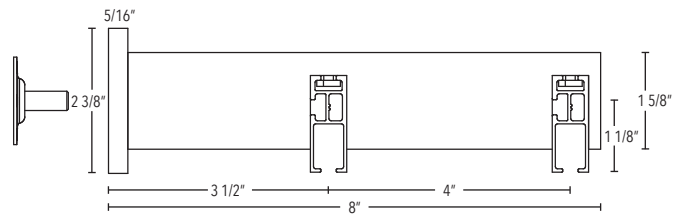
B11570-80-XX



B11473-80-XX

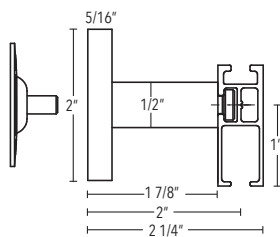


B11570-2-190-XX

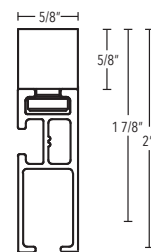


Ceiling Brackets:

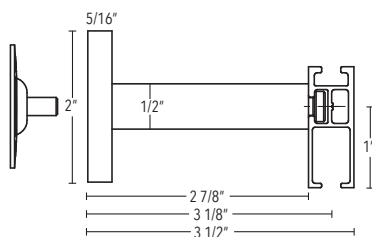
B11473-50-XX



B11473-15-XX



B11473-80-XX



B11592-00

