

# HANOVER COLLECTION INSTALL INSTRUCTIONS

BY SIMPLY FOLLOWING THESE STEP-BY-STEP INSTRUCTIONS, YOU WILL SOON BE ENJOYING YOUR NEW DRAPERY HARDWARE.

## Getting Started:

Please read through all instructions carefully before you begin installation.

Unpack all materials making sure all components are included:

- Assembled rail made to your specified length
- Brackets with Allen key

Please note that your brackets must be securely attached to the mounting surface. If your screws do not hit wood studs you'll have to use a different fastener, which can be found at any local hardware store.

## Tools You Will Need:

- Drill with a 1/8" bit and a Phillips bit
- Phillips screwdriver
- Metal tape measure

## Installing Your Hanover Rail System:

You are now ready to install your drapery hardware.

### Wall Mount:

#### 1. Measure

Rails are pre-cut to your specified size.

#### 2. Mark

Mark the height you would like the top of drapery rail to be installed. Note: see measurements on the following page.

#### 3. Mount

Attach your back plates to your desired area. Drill screws through holes for a secure mount. Repeat this process for all other brackets.

#### 4. Attach Bracket

- Place decorative faceplate over the back plate.
- Loosen the set screw and insert into slot on rail.

#### 5. Tighten

Tighten screw with Allen key to hold in place.

### Ceiling Mount:

#### 1. Measure

Rails are pre-cut to your specified size.

#### 2. Mark

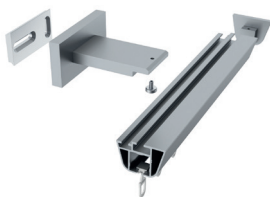
Mark the location you would like the top of drapery rail to be installed. Note: see measurements on the following page.

#### 3. Attach Bracket

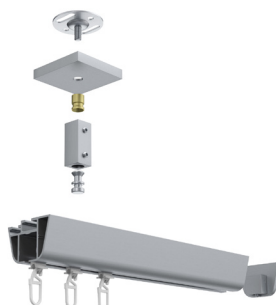
Remove the nut and brass insert. Attach your base to your desired area. Replace brass piece and nut. Repeat this process for all other brackets.

#### 5. Attach Rail

Place nut in top rail channel and tighten set screw with Allen key to hold rail in place.



B11260-90-XX, P = 3 3/4"  
B11260-130-XX, P = 4 3/4"  
Wall Bracket



B11473-50-XX, P = 2"  
B11473-80-XX, P = 2 7/8"  
Ceiling Bracket



B11473-15-XX, P = 5/8"  
Ceiling Bracket



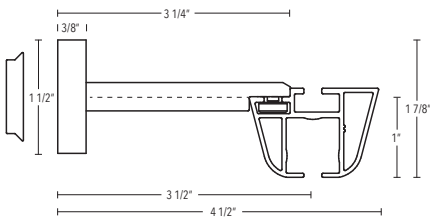
B11592-00  
Flush Ceiling Bracket

# HANOVER COLLECTION INSTALL INSTRUCTIONS

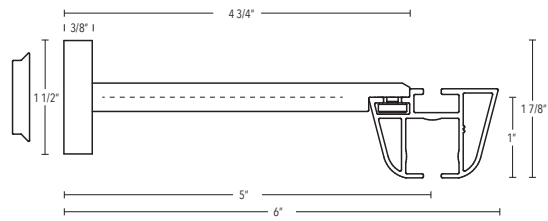
CONTINUED

## Wall Brackets:

B11260-90-XX

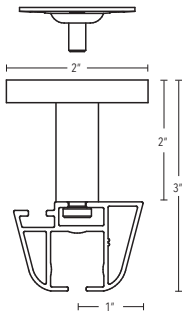


B11260-130-XX

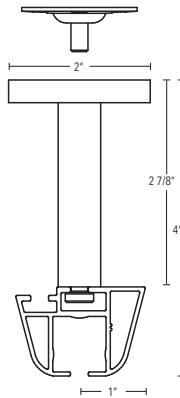


## Ceiling Brackets:

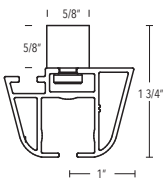
B11473-50-XX



B11473-80-XX



B11473-15-XX



B11592-00

