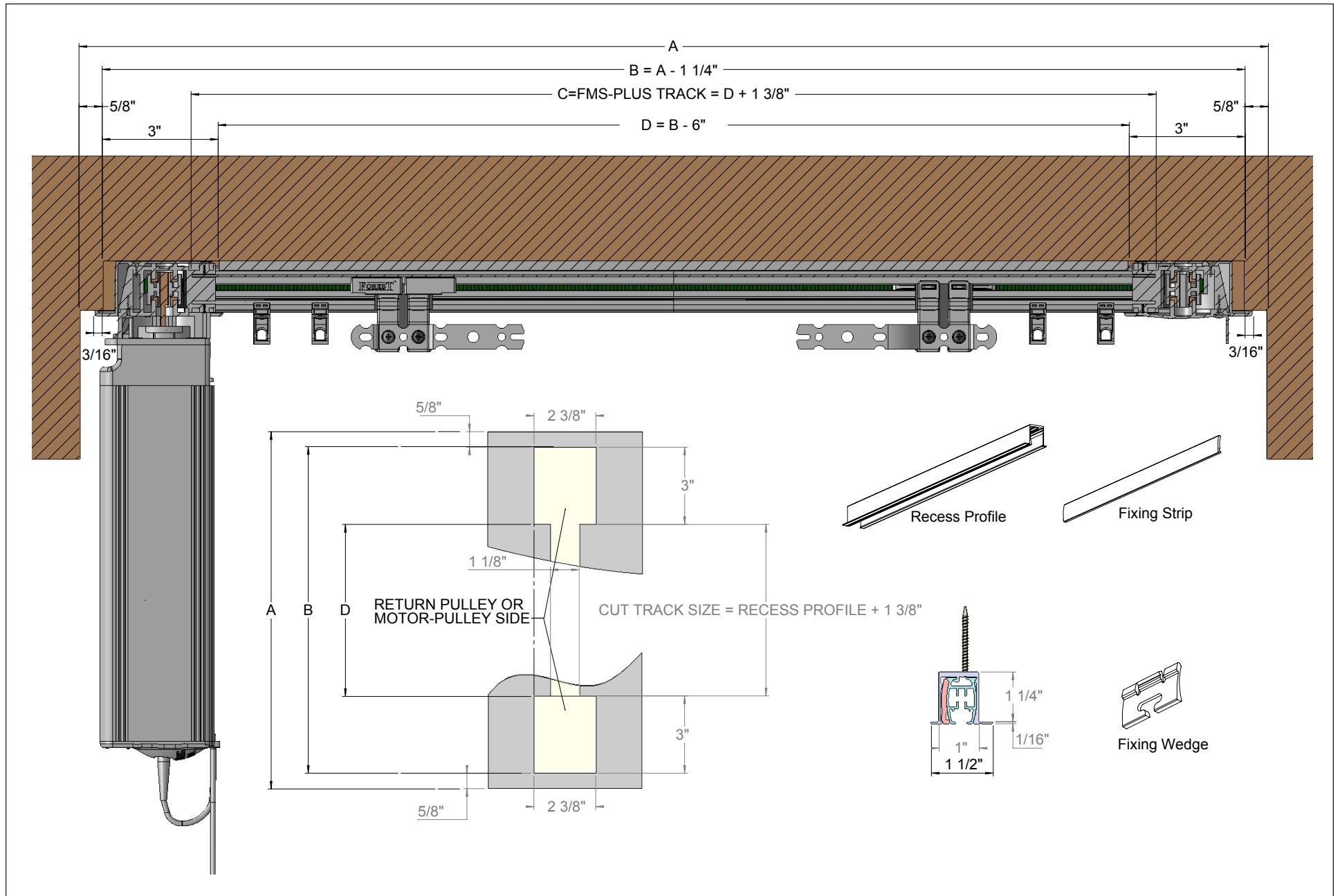


RMS RECESSED MOTORIZED SYSTEM INSTALLATION INSTRUCTIONS

SCHEMATIC DRAWING



RMS RECESSED MOTORIZED SYSTEM TRACK INSTALLATION INSTRUCTIONS

BY SIMPLY FOLLOWING THESE INSTRUCTIONS, YOU WILL SOON BE ENJOYING YOUR NEW DRAPERY HARDWARE.

Getting Started:

Please read through all instructions carefully before you begin.

Unpack all materials making sure all components are included:

- Track(s) pre-assembled to your specifications
- Recess Profile
- Fixing Strip

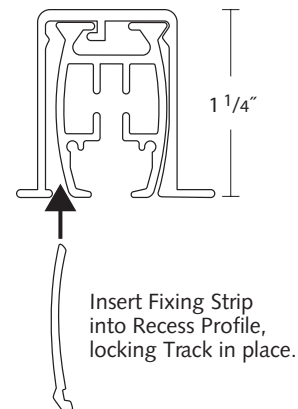
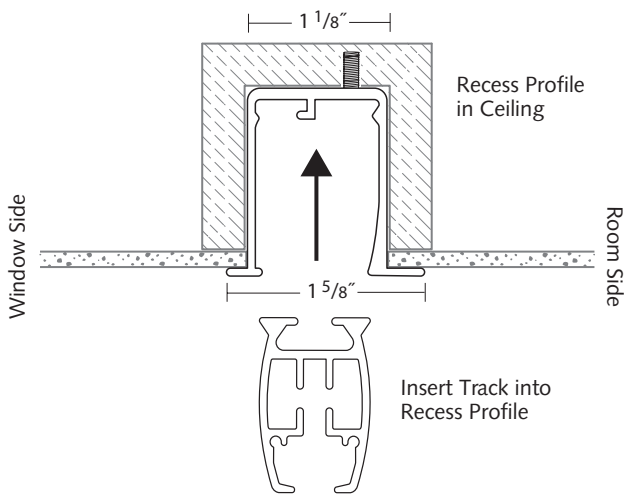
Tools You Will Need:

- Drill with a 1/8" bit and a Phillips bit
- Phillips screwdriver
- Metal tape measure

Recess Ceiling Mount Instructions:

Installing Your Drapery Track:

- 1. Mark**
Insert recess profile into pre-made recessed pocket in ceiling. Mark the screw hole locations pre-drilled into profile.
- 2. Mount**
First pre-drill holes for screw diameter when mounting into wood frame of window or wall stud. Otherwise, pre-drill and install anchors first before fastening with screws.
- 3. Insert Track**
Place the track into the recess profile.
- 4. Insert Track**
Place the track into the recess profile.
- 5. Insert Fixing Strip**
Insert the fixing strip into the recess profile to secure the track.



The Forest YouTube Channel is 24/7 Technical Support



Watch the RTS Recess Track System
Installation Video



Go to the Forest YouTube Channel