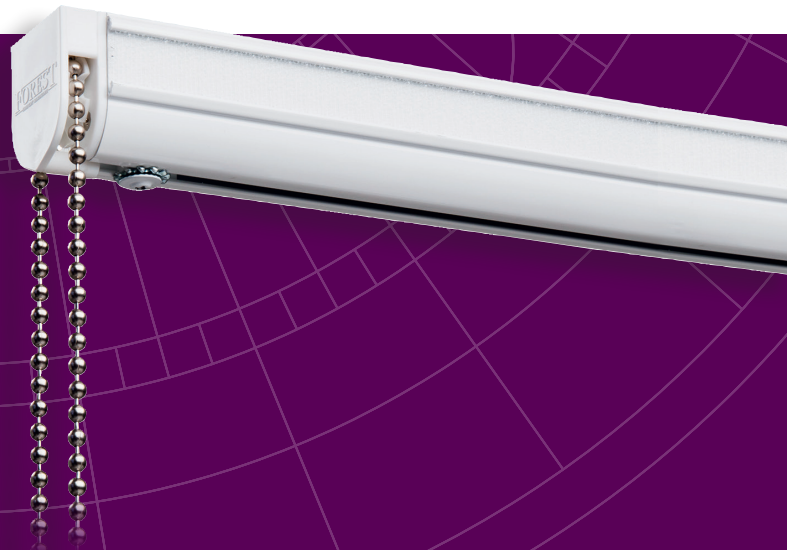




CHAIN  
CONTROL

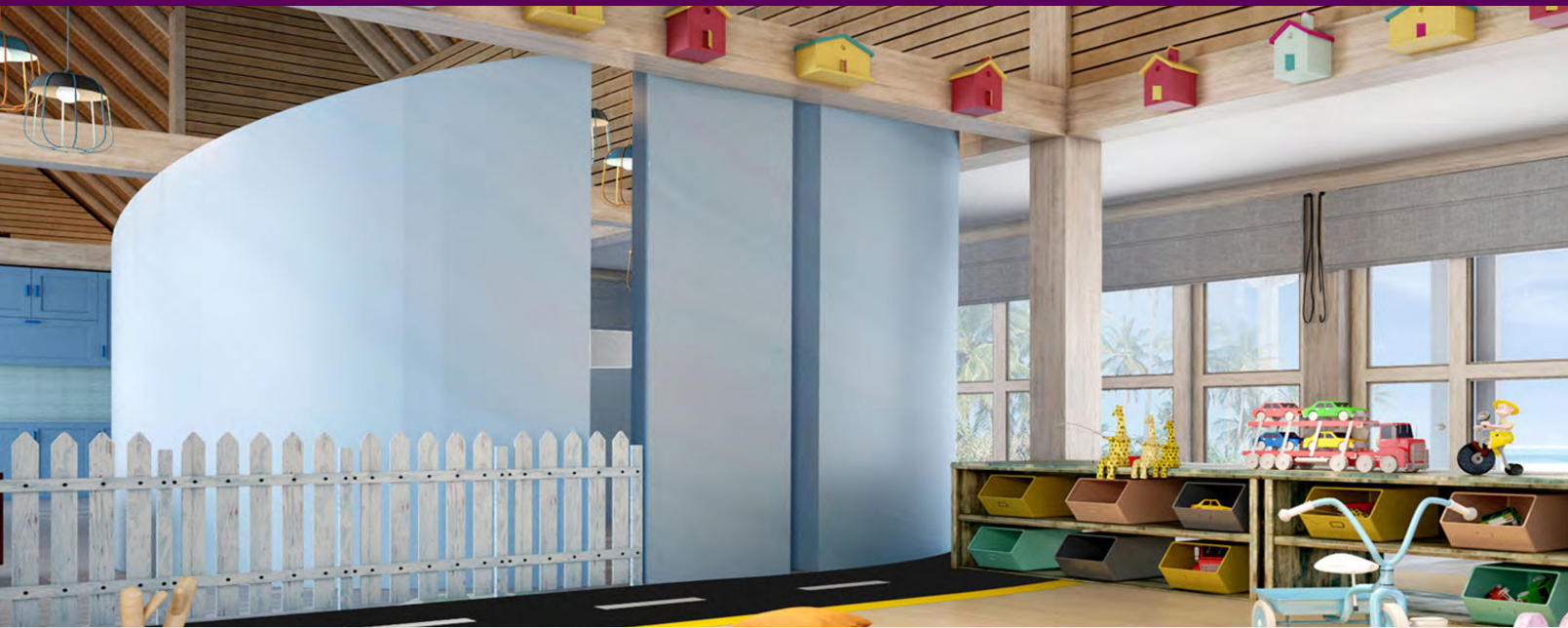
## FOREST RBS® Roman Blind System

The most durable and functional roman blind system on the market



THE WORLD  
BEHIND  
YOUR  
DRAPERIES





Scan for more information on the  
FOREST RBS Roman Blind System

## RBS ROMAN BLIND SYSTEM

The Forest Roman Blind System - RBS® is the most widely used and recognized roman blind in the industry. It comes with integrated Velcro tape so the fabric can be easily attached & removed. The system is always correctly aligned due to the twist lock on the cord roll support. For the ultimate convenience, a motorized control option is possible.



**MOTOR  
CONTROL  
AVAILABLE**

## PRODUCT INFORMATION

- For all types of light and medium weight draperies.
- Elegant shaped aluminum profile with Velcro hook tape.
- Profile is aluminum with a chromated powder coated white finish.
- Maximum weights:
  - 1:4 gear up to 18 lbs.
  - 1:2 gear up to 14 lbs.
  - 1:1 gear up to 10 lbs.
- 10 year warranty.
- Corded system includes a child safety device and warning label.

## CHILD SAFETY

All Forest corded products include a child safety tension device and a warning label.

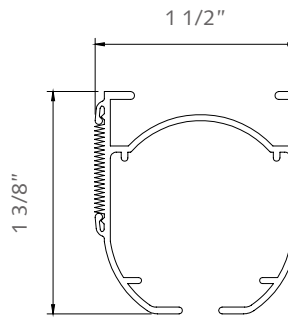


# FOREST RBS®



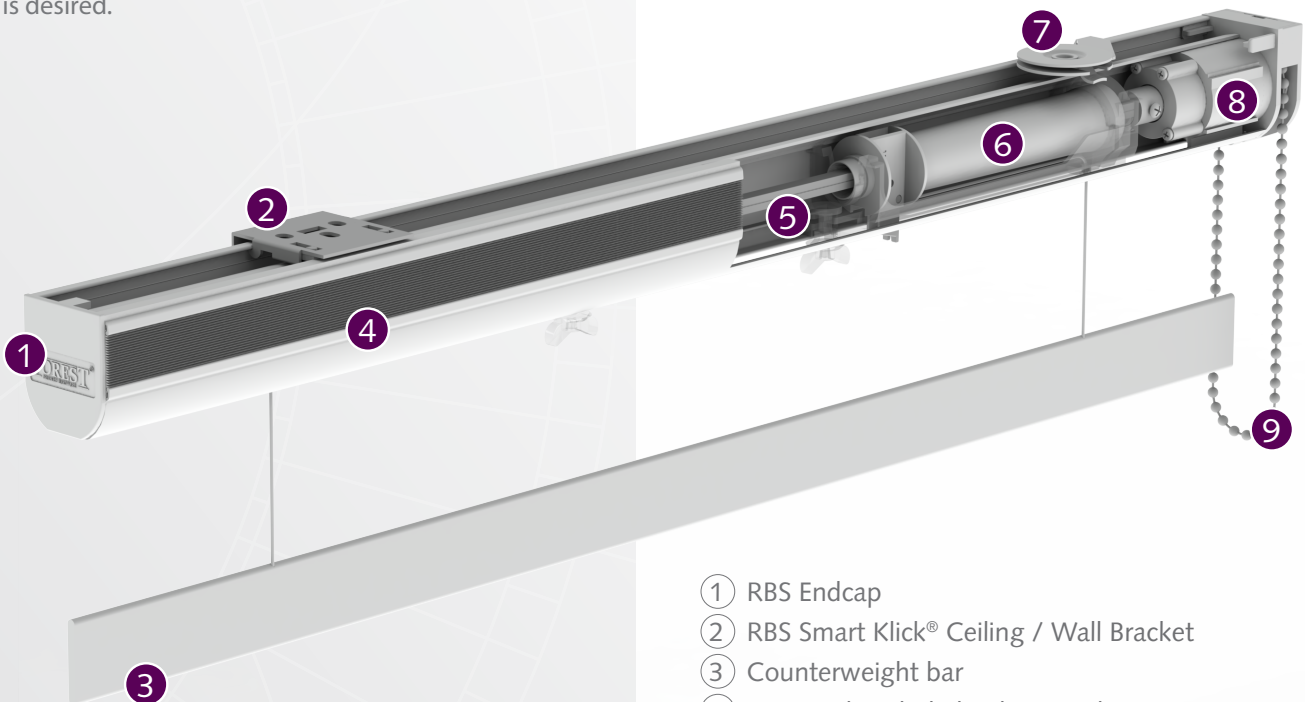
## PROFILE

- Aluminum extrusion 6063 T5
- Size 1 3/8" x 1 1/2"
- Finish available: white

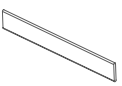
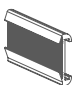

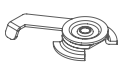



## FOR USE IN

Hotels, offices, residences, schools, healthcare facilities, or at any location where an efficient roman blind system is desired.



- ① RBS Endcap
- ② RBS Smart Klick® Ceiling / Wall Bracket
- ③ Counterweight bar
- ④ RBS Track included Velcro Hook Tape
- ⑤ RBS Rod 3/16" x 3/16"
- ⑥ RBS Quicklock Cord Roll, 12' drop
- ⑦ RBS Swivel Ceiling Bracket
- ⑧ RBS Control Unit 1:4
- ⑨ Chain

RBS	COMPONENT	RBS	COMPONENT
●	 <p><b>41019-25</b> RBS Headrail with integrated Velcro tape 19' x 10 rails/bundle bundle = 190'</p>	●	 <p><b>49008-25</b> Shade Leveler</p>
●	 <p><b>49010-25</b> RBS Cord Roll Support w/ quick lock, 12' drop</p>	●	 <p><b>39007-25</b> Velcro Tape 27 yds. per roll</p>
●	 <p>Control Unit w/ End Cap &amp; Retaining Ring heavy duty, self-braking <b>42311-25</b> 1:4 gear to 18 lbs. <b>42312-25</b> 1:2 gear to 14 lbs. <b>42310-25</b> 1:1 gear to 10 lbs.</p>	●	 <p><b>49006-25</b> Fiberglass Spines, 19' 3/16" diameter</p>
●	 <p><b>41119-90</b> 19' Rod aluminum 3/16" x 3/16"</p>	●	 <p><b>49014-25</b> Plastic Snap Ring</p>
●	 <p><b>49005-25</b> Counterweight, 19' aluminum 1" x 1/8"</p>	●	 <p><b>49013-25</b> Plastic Ring Cord Guide</p>
●	 <p><b>31116-25</b> Velcro Profile w/Hook Tape, 13.1'</p>	●	 <p>Endless Chain 25 white plastic or 90 nickel <b>49020-25, 90, 29"</b> <b>49021-25, 90, 39"</b> <b>49022-25, 90, 49"</b> <b>49023-25, 90, 59"</b> <b>49024-25, 90, 69"</b> <b>49025-25, 90, 79"</b> <b>49026-25, 90, 89"</b> <b>49027-25, 90, 99"</b></p>
●	 <p><b>43202-25</b> Swivel Wall Bracket</p>	 <p><b>MOTOR CONTROL AVAILABLE</b></p>	
●	 <p><b>43003-25</b> Swivel Ceiling Bracket</p>	●	 <p><b>76047-90</b> Metal Ball Chain Stopper</p>
●	 <p><b>43033-25</b> Klick Wall Bracket</p>	●	 <p><b>79005-00</b> Clear Ball Chain Stopper</p>
●	 <p><b>43034-25</b> Hidden Klick Multi Bracket</p>	●	 <p><b>49502-00</b> Tension Device For child safety</p>
●	 <p><b>43004-25</b> Klick Ceiling Bracket</p>		

● Standard item in assembled sets.