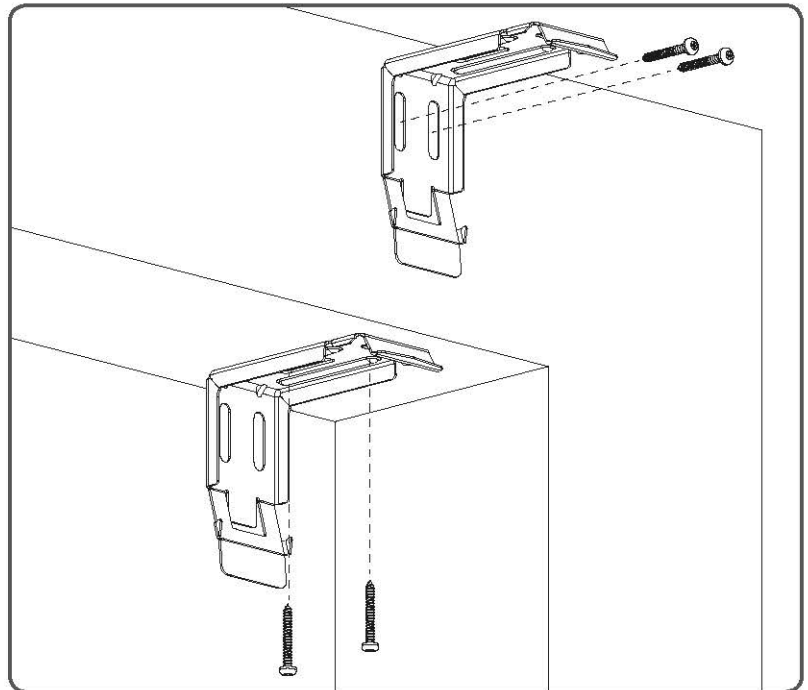
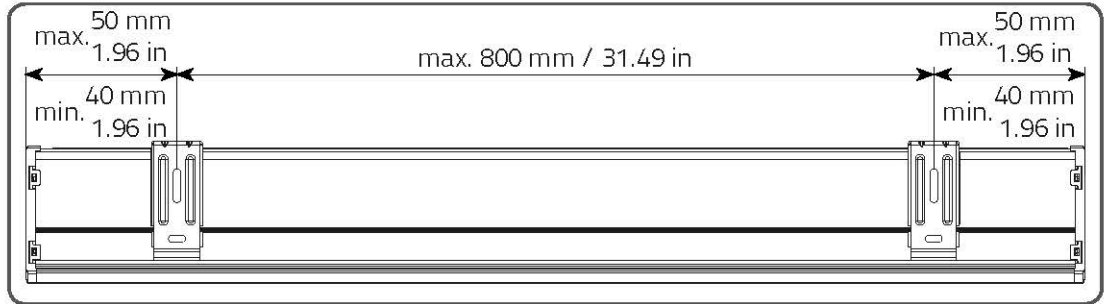
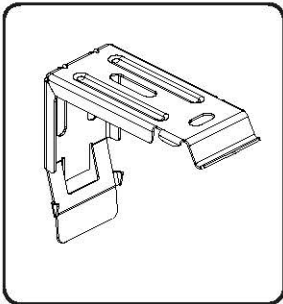
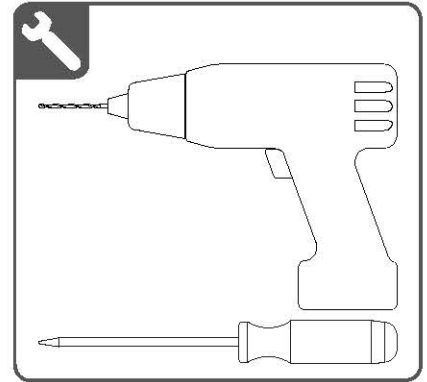
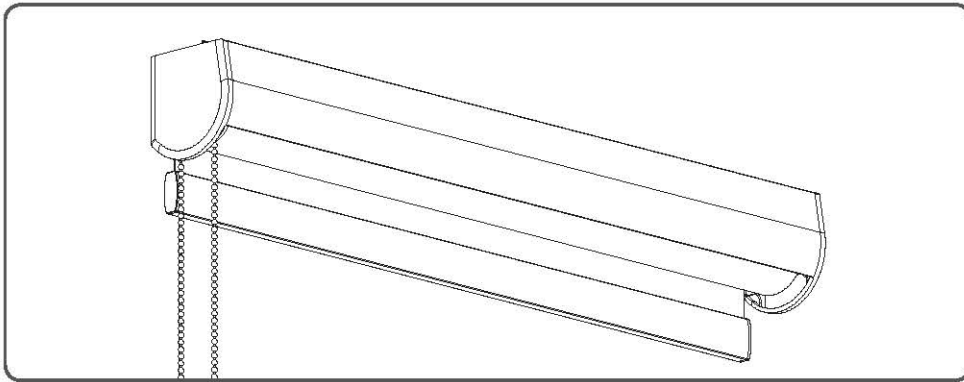


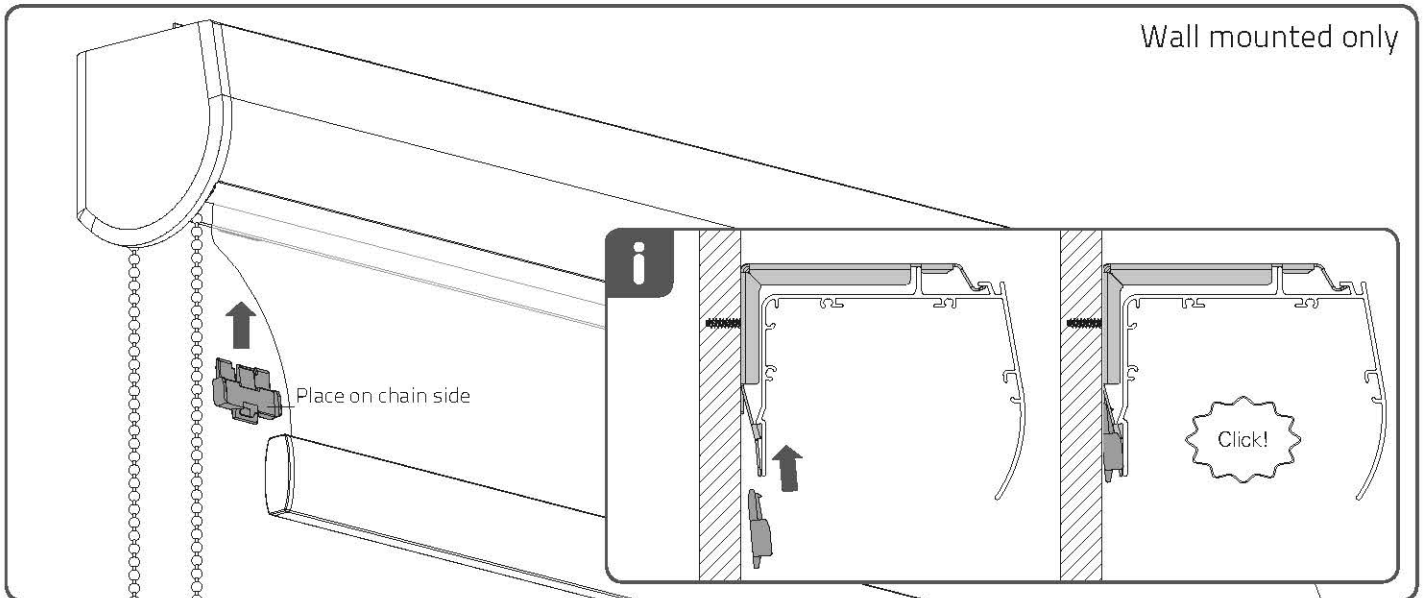
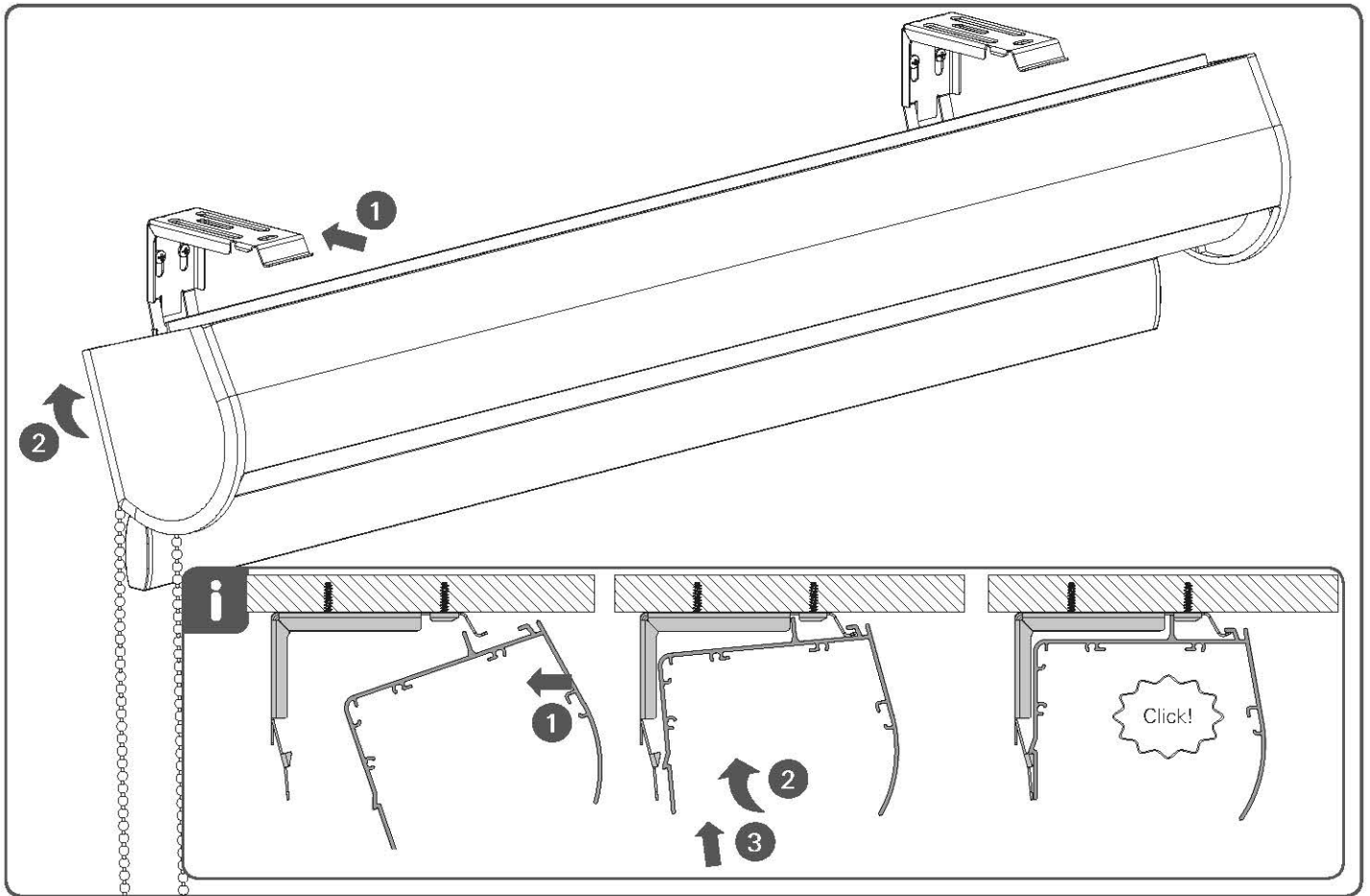
MERCURY SEMI OPEN MOUNT INSTALL INSTRUCTIONS

BY SIMPLY FOLLOWING THESE STEP-BY-STEP INSTRUCTIONS,
YOU WILL SOON BE ENJOYING YOUR NEW ROLLER SHADES.



MERCURY SEMI OPEN MOUNT INSTALL INSTRUCTIONS

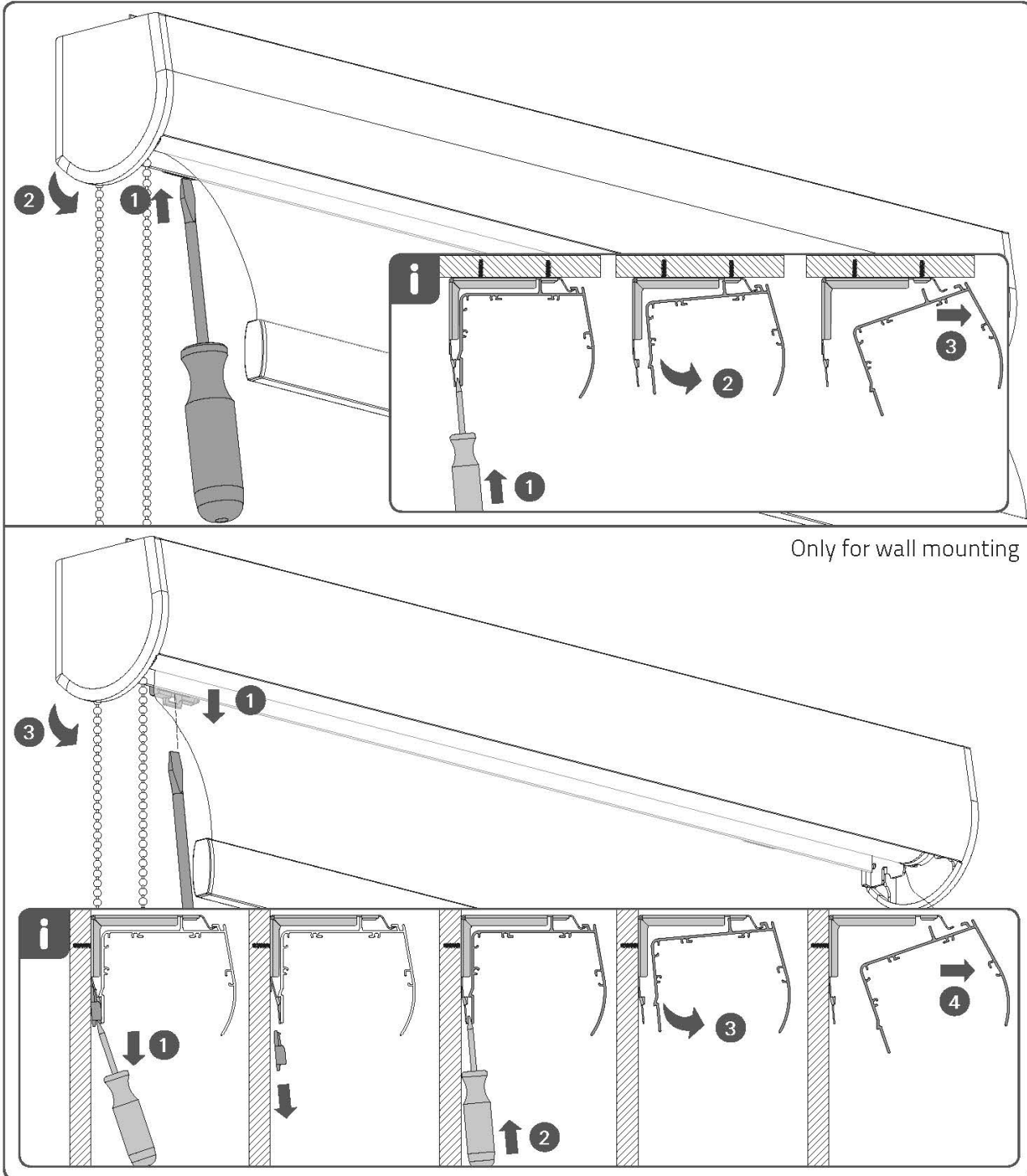
BY SIMPLY FOLLOWING THESE STEP-BY-STEP INSTRUCTIONS,
YOU WILL SOON BE ENJOYING YOUR NEW ROLLER SHADES.



MERCURY SEMI OPEN MOUNT INSTALL INSTRUCTIONS

BY SIMPLY FOLLOWING THESE STEP-BY-STEP INSTRUCTIONS, YOU WILL SOON BE ENJOYING YOUR NEW ROLLER SHADES.

Removal



49502-00 TENSION DEVICE FOR CHILD SAFETY

ASSEMBLY & INSTALLATION INSTRUCTIONS

BY SIMPLY FOLLOWING THESE STEP-BY-STEP INSTRUCTIONS, YOU WILL SOON BE ENJOYING YOUR NEW WINDOW TREATMENT.

Getting Started:

Please read through all instructions carefully before you begin.

Unpack all materials making sure all components are included:



Base



Cover



Outside Mount Bracket



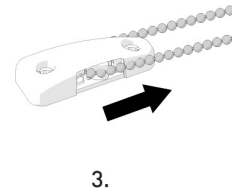
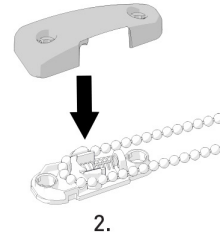
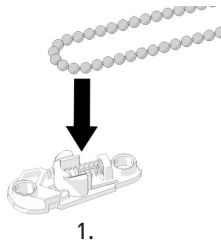
Side Mount Bracket

Tools You Will Need:

- Phillips screwdriver or drill with Phillips bit
- Optional anchors if needed

Assembling the 49502-00 Tension Device:

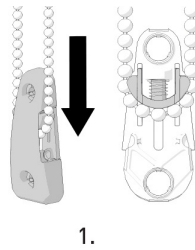
1. Place bead chain/cord on the bottom groove of the base.
2. Snap cover onto the base.
3. Pull the chain/cord out of the groove.



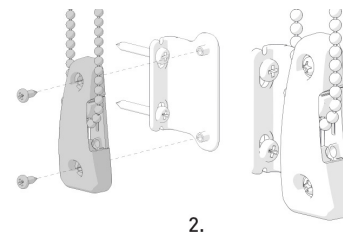
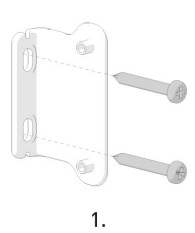
Installing the 49502-00 Tension Device:

1. Pull the Chainhold down until the chain/cord is fully tensioned (plunger will be fully raised).
2. Mark screw hole locations.
3. Screw device into wall.

Direct Mount



Outside Mount



Side Mount

