



**CHAIN
CONTROL**



**MOTOR
CONTROL**

APOLLO COLLECTION Roller Shades

APOLLO CASSETTE MOUNT Roller Shades
APOLLO DIRECT MOUNT Roller Shades

THE WORLD
BEHIND
YOUR
DRAPERIES



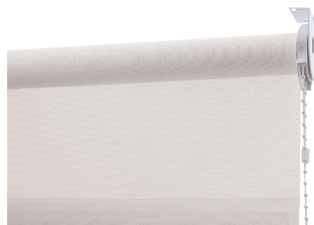
APOLLO COLLECTION ROLLER SHADES



Scan for more information
on FOREST Apollo Basic
Roller Shades



25
White



25
White

APOLLO CASSETTE & DIRECT MOUNT

- Wall or ceiling mount for residential or contract use
- Maximum weight is 8 lbs. 13 oz.
- 1 1/2" / 38mm tube and a bi-directional clutch

CASSETTE MOUNT ASSEMBLED SYSTEM

Includes stock fabric (see pages 33-34 for all fabric options), 38mm tube, roller mechanisms, brackets, bracket covers, valance, bottom rail with end caps, and child safety device.

DIRECT MOUNT ASSEMBLED SYSTEM

Includes stock fabric (see pages 33-34 for all fabric options), 38mm tube, roller mechanisms, brackets, bracket covers, bottom rail with end caps, and child safety device.

MOTORIZED CASSETTE OR DIRECT MOUNT



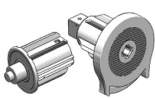
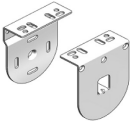




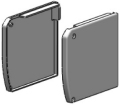

Choose a cassette or direct mount shade above, add the motor, the charging cable and choice of control device from below.



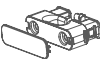
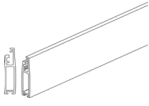

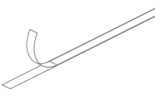


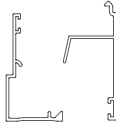
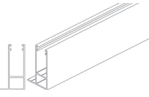

Maximum recommended weight is 16 lbs. per shade.

COMPONENT	
	68002-25 1.8 Nm Tubular Lithium iOn Motor, 3-year warranty Use with Forest controls
	78005-25 Micro USB Charging Cable for 68000-25 and 68002-25
	52931-25D white 59D black Diamond Sense Remote RF, 15 channel w/ holder, range 98'.

COMPONENT	
	52933-25 white 59 black Diamond Sense Wall Switch 2 channel Use with 68002-25
	52960-25 white, 59 black EasyTouch Remote, 6 channel 52961-00 Clear plastic holder; order separately.

APOLLO COLLECTION ROLLER SHADES

CASSETTE	DIRECT	COMPONENT
•	•	 71119-90 1 1/2" / 38mm 19' Tube, aluminum
•	•	 72311-25 Hold Down Strip with adhesive for tube 2,000 ft/roll
•	•	 72309HD-25 Heavy Duty Clutch w/ end plug
•	•	 72306-25 Multi-Purpose Bracket steel, 2 pcs
•	•	 72304-25 Bracket Cover
•		 72307-90 Wall Bracket steel
•		 72308-90 Ceiling Bracket steel
•		 71312-25 Cassette Headrail, 13'
		79001-25 Screw, 2 needed per headrail
•		 72314-25 Cassette Bracket Covers
		79001-25 Screw, 6 needed per set of 2 bracket covers
•		 71412-25 Cassette Valance, 13' aluminum, white

CASSETTE	DIRECT	COMPONENT
•	•	 Endless Chain 25 white plastic or 90 nickel 49020-25, 90, 29" 49021-25, 90, 39" 49022-25, 90, 49" 49023-25, 90, 59" 49024-25, 90, 69" 49025-25, 90, 79" 49026-25, 90, 89" 49027-25, 90, 99"
•	•	 79005-00 Clear Ball Stopper
•	•	 49501-00 Tension Device, child safety
•	•	 810219-25 Bottom Rail
•	•	 810001-25 Weight Insert for bottom rail
•	•	 810019-25 Adhesive Tape for bottom rail
•	•	 830004-25 End Cap for bottom rail
•	•	 810000-00 Brush for bottom rail
•	•	 2 Piece Outside Mount Side Channel 71619-25 Bottom 71719-25 Top
•	•	 810119-25 One Piece Inside Mount Side Channel, 19'
•	•	 79002-25 Brush for side channel

• Standard item in assembled sets.

FOREST IN STOCK FABRICS

STOCK ROLLER SHADE FABRICS

OUR STOCK ROLLER SHADE FABRIC PROGRAM is designed to offer you design trends in each of three categories - screens, light filtering, and blackout. We believe you will find a color and performance factor to meet your needs within this offering. Fabrics were also selected to work together in a single color palette when you need to pair a screen or light filtering fabric with a blackout. This is helpful when using a double roller shade system or when a single room has a variety of shading requirements.

All fabrics are suitable for any of our roller shade systems.

Fabric images are a close representation, but for best results please email sales@forestdh.com to order a swatch card.



SCREENS

With two openness factors, 3% and 5%, our screen collection offers the ideal solution for all needs in terms of heat and/or light management. Screen fabrics are made of high-quality polyester yarns for strength and durability.

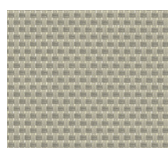
Flame retardant - 118 in. wide



WHITE
74002-99



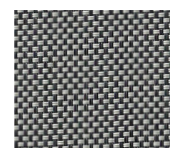
WHITE CREAM
74004-97



BEIGE CREAM
74020-81



WHITE GREY
74002-18



BLACK GREY
74003-55



BLACK
74002-59

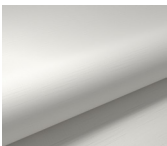
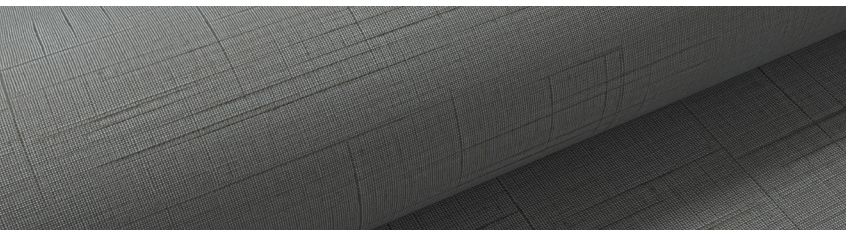
FOREST IN STOCK FABRICS



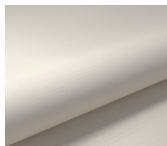
LIGHT FILTERING

Our light filtering collection offers transparent fabric that filters the light in a delicate way. The inspired fabric is available in a range of timeless colors.

Flame retardant - 94 in. wide



WHITE
75001-04



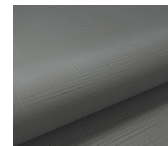
CREAM
75001-16



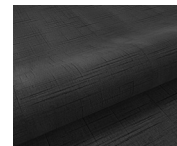
SAND
75001-17



MIST
75001-18



SLATE
75001-19



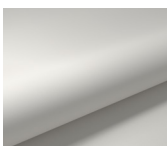
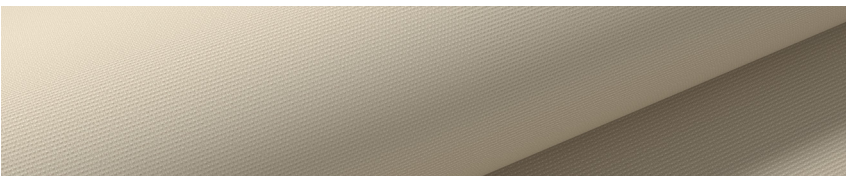
BLACK
75001-20



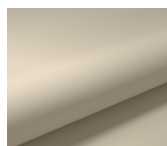
BLACKOUT

Our blackout fabric has a flocked backing which gives the back side of the fabric a soft textile appeal. With this fabric the room is completely darkened.

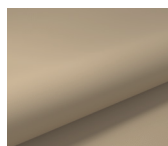
Flame retardant - 110 in. wide



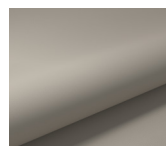
WHITE
75002-04



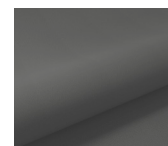
CREAM
75002-16



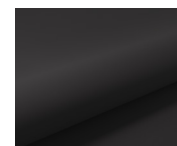
SAND
75002-17



MIST
75002-18



SLATE
75002-19



BLACK
75002-20