



## ATLANTIS MOTORIZED Roller Shades

ATLANTIS MOTORIZED Heavy Duty Roller Shades  
FOREST IN STOCK FABRICS

THE WORLD  
BEHIND  
YOUR  
DRAPERIES







Scan for more information on  
FOREST Atlantis HD Motorized  
Roller Shades

## ATLANTIS HEAVY DUTY MOTORIZED ROLLER SHADES

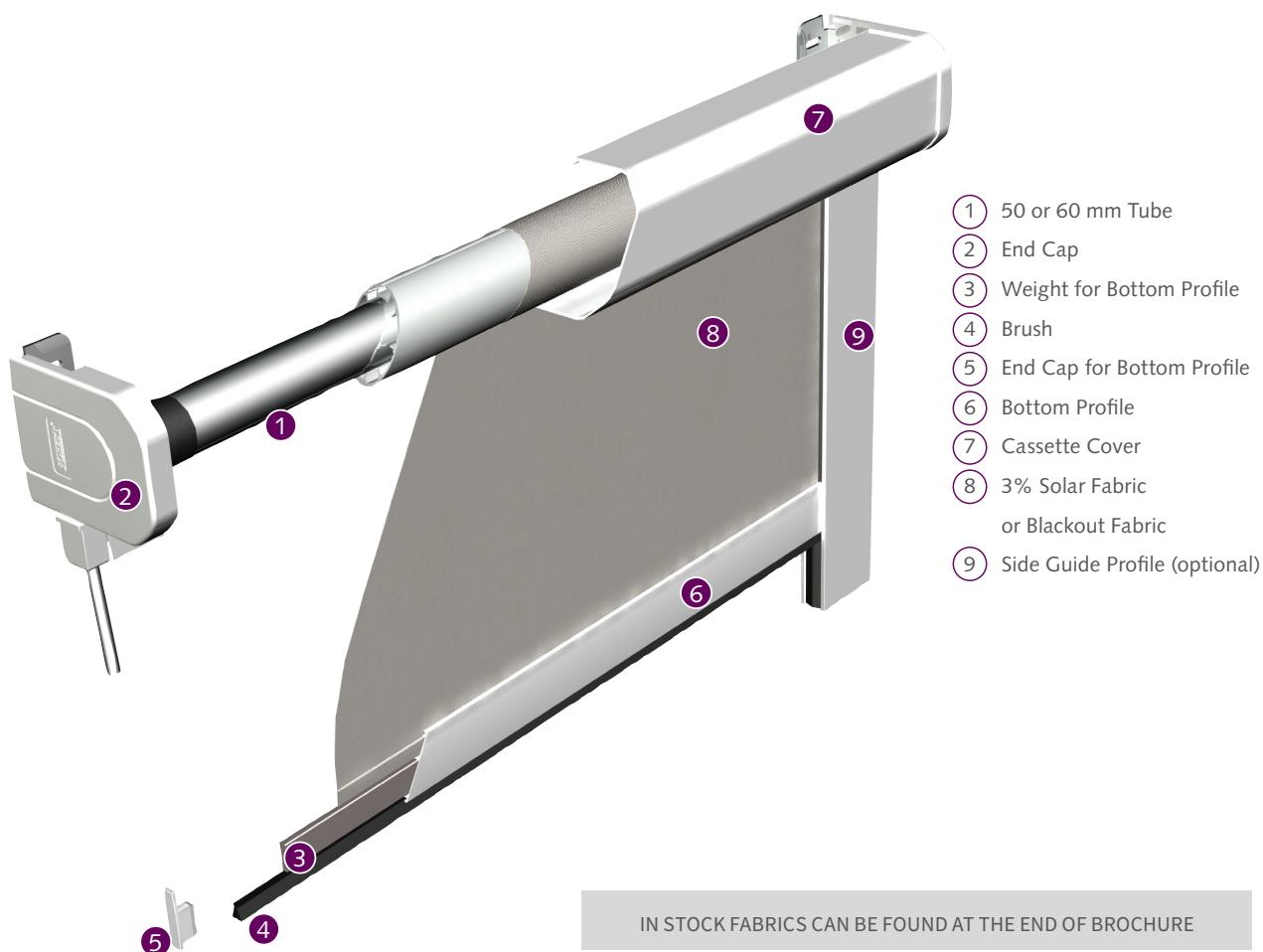
- Atlantis is a heavy duty system with a maximum weight of 45 lbs. Includes a 10-year warranty.
- Easy Installation with universal adjustable brackets
- 50mm and 60mm tube options and a bi-directional clutch

### CASSETTE MOUNT ASSEMBLED SYSTEM

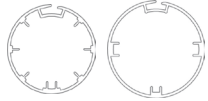


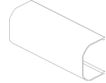

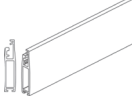

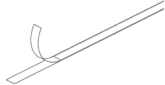


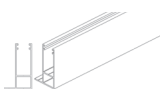
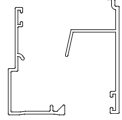

Includes Essentials fabric (see the end of brochure for all fabric options), tube, roller mechanism, brackets, bracket covers, cassette cover, motor, Diamond Sense remote or wall switch, & bottom rail w/ end caps.

### DIRECT MOUNT ASSEMBLED SYSTEM

Includes Essentials fabric (see the end of brochure for all fabric options), tube, roller mechanism, brackets, bracket covers, motor, Diamond Sense remote or wall switch, & bottom rail with end caps.



IN STOCK FABRICS CAN BE FOUND AT THE END OF BROCHURE

ATLANTIS	COMPONENT	
•		Aluminum Tube, 19' <b>815019-00</b> 50mm for shades up to 72" <b>816019-00</b> 60mm for shades up to 144"
•		<b>82CL01-25</b> Left <b>82CR01-25</b> Right Standard Ceiling/Wall Idler Brackets
•		<b>82CL00-25</b> Left <b>82CR00-25</b> Right Standard Ceiling/Wall Motor Bracket
•		<b>810319-25</b> Cassette Cover, 19'
•		<b>830001-25</b> Bracket End Cap
•		<b>810219-25</b> Bottom Rail
•		<b>810001-25</b> Weight Insert for bottom rail
•		<b>72311-25</b> Adhesive Tape for bottom rail and tube attachment
•		<b>830004-25</b> End Cap for bottom rail
•		<b>810000-00</b> Brush for bottom rail
•		<b>810119-25</b> One Piece Inside Mount Side Channel, 19'
•		2 Piece Outside Mount Side Channel <b>71619-25</b> Bottom <b>71719-25</b> Top
•		<b>79002-25</b> Brush for side channel

ATLANTIS	COMPONENT	
•		<b>62901-25</b> 6 Nm AC Motor built-in RF receiver See motor specs p. 103-104.
•		<b>835000-00</b> 50mm Motor Adaptor
•		<b>835001-00</b> 50mm Idler
•		<b>836000-00</b> 60mm Motor Adaptor
•		<b>836001-00</b> 60mm Idler
•		<b>68002-25</b> 1.8 Nm iOn Motor, built in RF See motor specs p. 103-104.
•		<b>78005-25</b> Micro USB Charging Cable for 68002-25
•		Crowns for 68002-25 <b>68002-AT50-CR</b> 50mm <b>68002-AT60-CR</b> 60mm
•		Drives for 68002-25 <b>68002-AT50-DR</b> 50mm <b>68002-AT60-DR</b> 60mm
•		<b>68002-AT-BA</b> Bracket Adaptor 50 & 60mm
•		<b>52960-25</b> white <b>52960-59</b> black +10% EasyTouch Remote 6 channel hand held remote
•		<b>52961-00</b> EasyTouch Remote Holder Optional and must be ordered separately
•		<b>52933-25</b> white <b>52933-59</b> black +10% EasyTouch Wall Switch 2 channel
•		<b>52955-25</b> Bond Bridge Pro For voice & app control over RF. Pair using the Forest remote.
•		<b>52954-25</b> Sidekick Gen 3 Remote Works with or without Bond Bridge Pro, 1-5 channels.



## 68002 iOn

## 62901 AC



### USE WITH

APOLLO  
MERCURY  
ATLANTIS

✓  
✓  
✓

-  
-  
✓

### SPECIFICATIONS

TORQUE	1.8 Nm	6.0 Nm
POWER	Lithium Ion Battery	110V 113-Watt
SPEED	25 rpm	33 rpm
DB LEVEL	36-40 dB	<40 dB
MAX WEIGHT	16 lbs	45 lbs
BUILT-IN COMMUNICATION	RF	RF
AVG LIFECYCLE PER CHARGE	6 Months - 1 up & 1 down	n/a
CHARGING	6-8 hrs, charger included	n/a
APP CONTROL	Bond Bridge & Sidekick	Bond Bridge & Sidekick
WARRANTY	3 years	10 years





**SMART HOME**  
READY



**APP**  
CONTROL



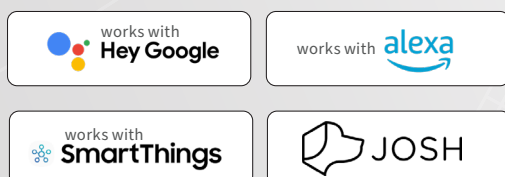
**WIRELESS**  
REMOTE

## POPULAR INTEGRATIONS & VOICE ASSISTANTS

### INTEGRATIONS



### VOICE ASSISTANTS



## OUR WIDE VARIETY OF CONTROL OPTIONS

make finding a fit for your windows easy – controlling your roller shades by remote, wall switch, voice, app or even by home automation system.



### EASYTOUCH CONTROLS

We have designed a new line of controls with a modern look and feel. Range of controls is up to 98’.

- The EasyTouch remote controls up to 6 systems, with the option to deactivate unused channels.
- EasyTouch wall switch is a sleek 2-channel option for your wall.



### VOICE & APP CONTROL

Use Forest Link technology (WiFi) or the Bond Bridge Pro (RF) to integrate your window treatments into the Forest Connect App, Google Home, Alexa, and Siri, as well as automation systems like Crestron, Control 4, Elan, and more.



### SIDEKICK GEN 3 REMOTE

5- or 1-channel remote control. Pairs directly with tubular motor. Use with Bond Bridge Pro or without. Estimated 10-year battery life.

# STOCK ROLLER SHADE FABRICS

**OUR STOCK ROLLER SHADE FABRIC PROGRAM** is designed to offer you design trends in each of three categories – screens, light filtering, and blackout.

We believe you will find a color and performance factor to meet your needs within this offering. Fabrics were also selected to work together in a single color palette when you need to pair a screen or light filtering fabric with a blackout. This is helpful when using a double roller shade system or when a single room has a variety of shading requirements. All fabrics are suitable for any of our roller shade systems.

**FABRIC IMAGES ARE A CLOSE REPRESENTATION, BUT FOR BEST RESULTS PLEASE EMAIL [SALES@FORESTDH.COM](mailto:SALES@FORESTDH.COM) TO ORDER A SWATCH CARD.**



## SCREENS

With two openness factors, 3% and 5%, our screen collection offers the ideal solution for all needs in terms of heat and/or light management. Screen fabrics are made of high quality polyester yarns for strength and durability.

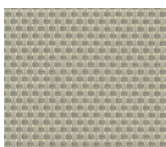
**118 IN. WIDE  
FLAME RETARDANT  
\$95.27/YD**



**WHITE  
74002-99**



**WHITE CREAM  
74004-97**



**BEIGE CREAM  
74020-81**



**WHITE GREY  
74002-18**



**BLACK GREY  
74003-55**



**BLACK  
74002-59**

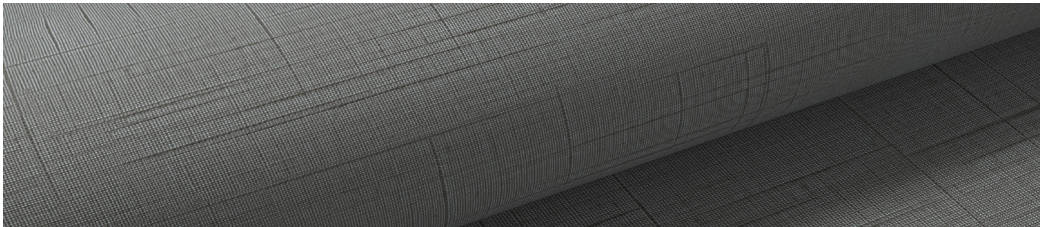




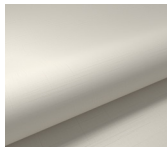
## LIGHT FILTERING

Our light filtering collection offers transparent fabric that filters the light in a delicate way. The inspired fabric is available in a range of timeless colors.

**94 IN. WIDE**  
**FLAME RETARDANT**  
**\$263.79/YD**



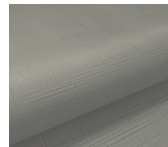
**WHITE**  
**75001-04**



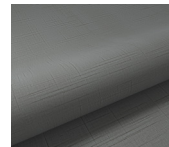
**CREAM**  
**75001-16**



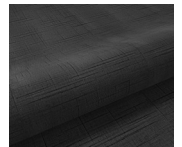
**SAND**  
**75001-17**



**MIST**  
**75001-18**



**SLATE**  
**75001-19**



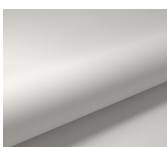
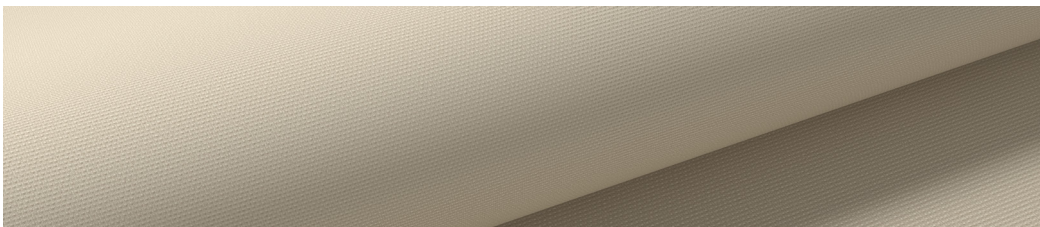
**BLACK**  
**75001-20**



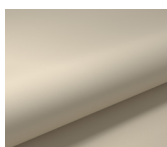
## BLACKOUT

Our blackout fabric has a flocked backing which gives the back side of the fabric a soft textile appeal. With this fabric the room is completely darkened.

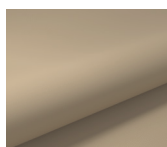
**110 IN. WIDE**  
**FLAME RETARDANT**  
**\$311.36/YD**



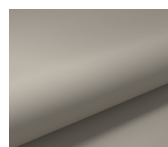
**WHITE**  
**75002-04**



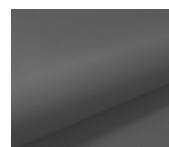
**CREAM**  
**75002-16**



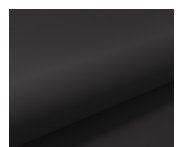
**SAND**  
**75002-17**



**MIST**  
**75002-18**



**SLATE**  
**75002-19**



**BLACK**  
**75002-20**