



APOLLO ROLLER SHADES



MANUAL
OPERATION

Apollo Roller Shades offer a straightforward solution for both residential and contract environments. Designed with reliability and simplicity in mind, they deliver smooth operation and everyday functionality at an accessible value.

*APOLLO CASSETTE MOUNT ROLLER SHADES
APOLLO DIRECT MOUNT ROLLER SHADES*

THE WORLD
BEHIND
YOUR
DRAPERIES



APOLLO ROLLER SHADES



25
White

APOLLO CASSETTE & DIRECT MOUNT

- Wall or ceiling mount for residential or contract use
- Maximum weight is 8 lbs. 13 oz.
- 1 1/2" / 38mm tube and a bi-directional clutch

CASSETTE MOUNT ASSEMBLED SYSTEM



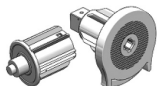


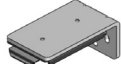


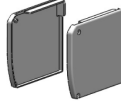

Includes stock fabric (see fabric options at the end of brochure), 38mm tube, roller mechanisms, brackets, bracket covers, valance, bottom rail with end caps, and child safety device.




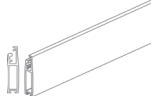

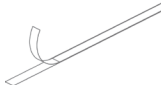


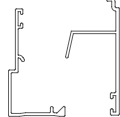
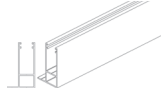



25
White

DIRECT MOUNT ASSEMBLED SYSTEM

Includes stock fabric (see fabric options at the end of brochure), 38mm tube, roller mechanisms, brackets, bracket covers, bottom rail with end caps, and child safety device.

CASSETTE	DIRECT	COMPONENT
•	•	 71119-90 1 1/2" / 38mm 19' Tube, aluminum
•	•	 72311-25 Hold Down Strip with adhesive for tube 2,000 ft/roll
•	•	 72309HD-25 Heavy Duty Clutch w/ end plug
•	•	 72306-25 Multi-Purpose Bracket steel, 2 pcs
•	•	 72304-25 Bracket Cover
•		 72307-90 Wall Bracket steel
•		 72308-90 Ceiling Bracket steel
•		 71312-25 Cassette Headrail, 13'
		79001-25 Screw, 2 needed per headrail
•		 72314-25 Cassette Bracket Covers
		79001-25 Screw, 6 needed per set of 2 bracket covers
•		 71412-25 Cassette Valance, 13' aluminum, white

CASSETTE	DIRECT	COMPONENT
•	•	 Endless Chain 25 white plastic or 90 nickel 49020-25, 90 , 29" drop 49021-25, 90 , 39" drop 49022-25, 90 , 49" drop 49023-25, 90 , 59" drop 49024-25, 90 , 69" drop 49025-25, 90 , 79" drop 49026-25, 90 , 89" drop 49027-25, 90 , 99" drop
•	•	 79005-00 Clear Ball Stopper
•	•	 49502-00 Tension Device for child safety
•	•	 810219-25 Bottom Rail
•	•	 810001-25 Weight Insert for bottom rail
•	•	 72311-25 Adhesive Tape for bottom rail
•	•	 830004-25 End Cap for bottom rail
•	•	 810000-00 Brush for bottom rail
•	•	 2 Piece Outside Mount Side Channel 71619-25 Bottom 71719-25 Top
•	•	 810119-25 One Piece Inside Mount Side Channel, 19'
•	•	 79002-25 Brush for side channel

• Standard item in assembled sets.

ROLLER SHADE FABRICS

STOCK ROLLER SHADE FABRICS

OUR STOCK ROLLER SHADE FABRIC PROGRAM is designed to offer you design trends in each of three categories – screens, light filtering, and blackout.

We believe you will find a color and performance factor to meet your needs within this offering. Fabrics were also selected to work together in a single color palette when you need to pair a screen or light filtering fabric with a blackout. This is helpful when using a double roller shade system or when a single room has a variety of shading requirements. All fabrics are suitable for any of our roller shade systems.

FABRIC IMAGES ARE A CLOSE REPRESENTATION, BUT FOR BEST RESULTS PLEASE EMAIL SALES@FORESTDH.COM TO ORDER A SWATCH CARD.



SCREENS

With two openness factors, 3% and 5%, our screen collection offers the ideal solution for all needs in terms of heat and/or light management. Screen fabrics are made of high quality polyester yarns for strength and durability.

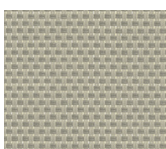
**118 IN. WIDE
FLAME RETARDANT**



**WHITE
74002-99**



**WHITE CREAM
74004-97**



**BEIGE CREAM
74020-81**



**WHITE GREY
74002-18**



**BLACK GREY
74003-55**



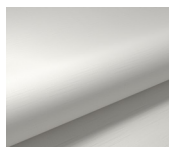
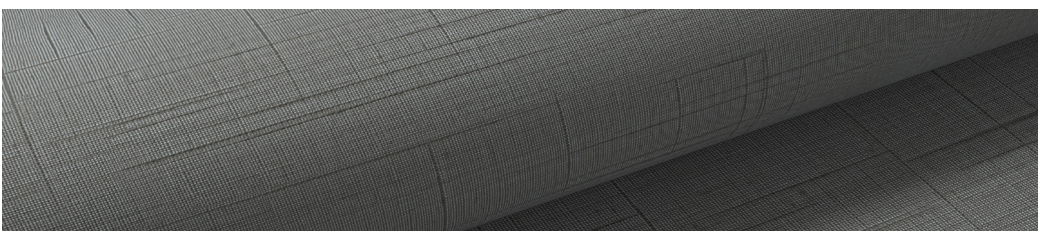
**BLACK
74002-59**



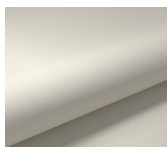
LIGHT FILTERING

Our light filtering collection offers transparent fabric that filters the light in a delicate way. The inspired fabric is available in a range of timeless colors.

**94 IN. WIDE
FLAME RETARDANT**



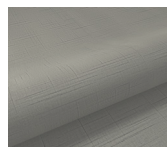
WHITE
75001-04



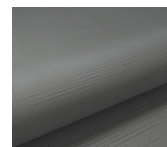
CREAM
75001-16



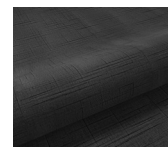
SAND
75001-17



MIST
75001-18



SLATE
75001-19



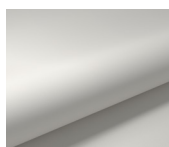
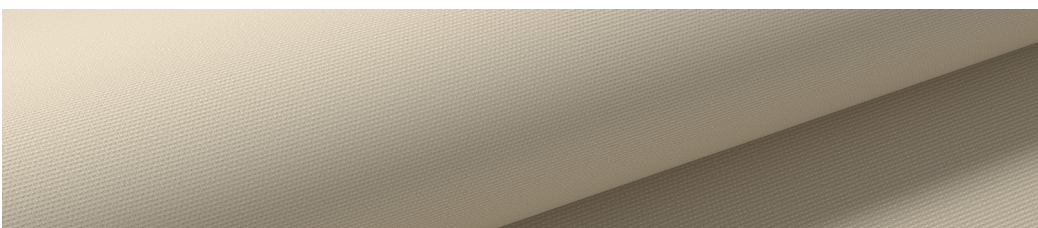
BLACK
75001-20



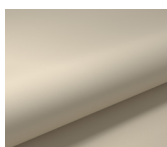
BLACKOUT

Our blackout fabric has a flocked backing which gives the back side of the fabric a soft textile appeal. With this fabric the room is completely darkened.

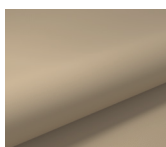
**110 IN. WIDE
FLAME RETARDANT**



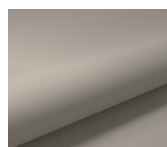
WHITE
75002-04



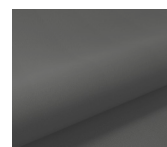
CREAM
75002-16



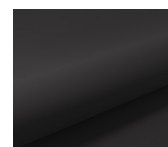
SAND
75002-17



MIST
75002-18



SLATE
75002-19



BLACK
75002-20

Forest specializes in the development, production and supply of highly innovative drapery tracks and window coverings. We offer track solutions catering to the hospitality industry. Whether you choose our motorized tracks or rods, shades or hand drawn rods your client will experience comfortable luxury and optimal ease of use.

THE WORLD BEHIND YOUR DRAPERIES

More than thirty years ago it started with a flexible aluminum system, known as the Forest KS® system. The product line was expanded at a rapid pace, always focusing on functionality and quality. The technologies conquered the world. Hotels across the globe are satisfied users of Forest systems including iconic hotels like the Venetian, Hardrock and the mega hotels in Dubai.

Forest Group B.V. sells its products in more than 100 countries worldwide and has sales offices in The Netherlands, the United States, China, United Arab Emirates, United Kingdom and Poland, ensuring global availability.

Some well-known and recognized features of the Forest track systems are:

- **High-quality standards:** We guarantee a long lifespan.
- **Comfort and quiet:** Drapes open and close silently, creating a serene and comfortable environment.
- **Adds style to windows:** Always perfectly hanging drapery thanks to our systems, including motorized solutions.
- **Smart integration:** Controllable via app, voice, and home automation systems for ultimate convenience.
- **Sustainability:** We use a minimum of 75% recycled aluminum in our tracks.
- **Unique warranty:** 10-year warranty.



Drapery engineering by Forest