



ATLANTIS ROLLER SHADES



MANUAL
OPERATION

Atlantis Roller Shades are engineered for heavy-duty performance. Built with reinforced components and a stable, precision-balanced design, they provide reliable control and long-lasting durability—ideal for both demanding commercial settings and high-use residential spaces.

ATLANTIS HEAVY DUTY ROLLER SHADES

THE WORLD
BEHIND
YOUR
DRAPERIES

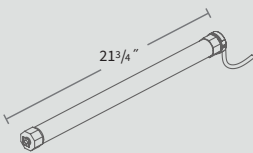
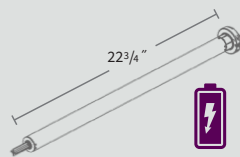


ROLLER SHADE MOTOR SPECIFICATIONS



68002 iOn

62901 AC



USE WITH

APOLLO	✓	-
MERCURY	✓	-
ATLANTIS	✓	✓

SPECIFICATIONS

TORQUE	1.8 Nm	6.0 Nm
POWER	Lithium Ion Battery	110V 113-Watt
SPEED	25 rpm	33 rpm
DB LEVEL	36-40 dB	<40 dB
MAX WEIGHT	16 lbs	45 lbs
BUILT-IN COMMUNICATION	RF	RF
AVG LIFECYCLE PER CHARGE	6 Months - 1 up & 1 down	n/a
CHARGING	6-8 hrs, charger included	n/a
APP CONTROL	Bond Bridge & Sidekick	Bond Bridge & Sidekick
WARRANTY	3 years	10 years



SMART HOME
READY



APP
CONTROL



WIRELESS
REMOTE

POPULAR INTEGRATIONS & VOICE ASSISTANTS

INTEGRATIONS

Control4

CRESTRON

SAVANT

RTI



HOMEBRIDGE

ELAN



Hubitat

U-C

VOICE ASSISTANTS



works with
Hey Google

works with
alexa



works with
SmartThings



JOSH

OUR WIDE VARIETY OF CONTROL OPTIONS

make finding a fit for your windows easy –
controlling your roller shades by remote, wall
switch, voice, app or even by home automation
system.



EASYTOUCH CONTROLS

We have designed a new line of
controls with a modern look and
feel. Range of controls is up to 98'.

- The EasyTouch remote controls
up to 6 systems, with the option
to deactivate unused channels.
- EasyTouch wall switch is a sleek
2-channel option for your wall.



VOICE & APP CONTROL

Use Forest Link technology (WiFi)
or the Bond Bridge Pro (RF) to
integrate your window treatments
into the Forest Connect App, Google
Home, Alexa, and Siri, as well as
automation systems like Crestron,
Control 4, Elan, and more.



SIDEKICK GEN 4 REMOTE

5- or 1-channel remote control.
Pairs directly with tubular motor.
Use with Bond Bridge Pro or
without. Estimated 10-year
battery life.

ATLANTIS HEAVY DUTY



ATLANTIS HEAVY DUTY MOTORIZED ROLLER SHADES

- Atlantis is a heavy duty system with a maximum weight of 45 lbs. Includes a 10-year warranty.
- Easy Installation with universal adjustable brackets
- 50mm and 60mm tube options and a bi-directional clutch

CASSETTE MOUNT ASSEMBLED SYSTEM

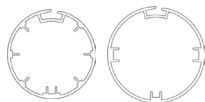




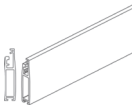

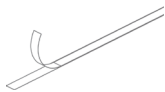



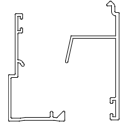

Includes stock fabric (see fabric options at the end of brochure), tube, roller mechanism, brackets, bracket covers, cassette cover, motor, EasyTouch remote or wall switch, & bottom rail w/ end caps.


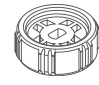

DIRECT MOUNT ASSEMBLED SYSTEM

Includes stock fabric (see fabric options at the end of brochure), tube, roller mechanism, brackets, bracket covers, motor, EasyTouch remote or wall switch, & bottom rail with end caps.



25
White

ATLANTIS	COMPONENT	
•		Aluminum Tube, 19" 815019-00 50mm for shades up to 72" 816019-00 60mm for shades up to 144"
•		82CL01-25 Left 82CR01-25 Right Standard Ceiling/Wall Idler Brackets
•		82CL00-25 Left 82CR00-25 Right Standard Ceiling/Wall Motor Bracket
•		810319-25 Cassette Cover, 19"
•		830001-25 Bracket End Cap
•		810219-25 Bottom Rail
•		810001-25 Weight Insert for bottom rail
•		72311-25 Adhesive Tape for bottom rail and tube attachment
•		830004-25 End Cap for bottom rail
•		810000-00 Brush for bottom rail
•		810119-25 One Piece Inside Mount Side Channel, 19"
•		2 Piece Outside Mount Side Channel 71619-25 Bottom 71719-25 Top
•		79002-25 Brush for side channel

ATLANTIS	COMPONENT	
•		62901-25 6 Nm AC Motor built-in RF receiver
•		835000-00 50mm Motor Adaptor
•		835001-00 50mm Idler
•		836000-00 60mm Motor Adaptor
•		836001-00 60mm Idler
•		68002-25 1.8 Nm iOn Motor, built in RF
•		78005-25 Micro USB Charging Cable for 68002-25
•		Crowns for 68002-25 68002-AT50-CR 50mm 68002-AT60-CR 60mm
•		Drives for 68002-25 68002-AT50-DR 50mm 68002-AT60-DR 60mm
•		68002-AT-BA Bracket Adaptor 50 & 60mm
•		52960-25 white 52960-59 black EasyTouch Remote 6 channel hand held remote
•		52961-00 EasyTouch Remote Holder Optional and must be ordered separately
•		52933-25 white 52933-59 black EasyTouch Wall Switch 2 channel
•		52955-25 Bond Bridge Pro For voice & app control over RF. Pair using the Forest remote.
•		52954-25 Sidekick Gen 4 Remote Works with or without Bond Bridge Pro, 1-5 channels.

• Standard item in assembled sets.

ROLLER SHADE FABRICS

STOCK ROLLER SHADE FABRICS

OUR STOCK ROLLER SHADE FABRIC PROGRAM is designed to offer you design trends in each of three categories – screens, light filtering, and blackout.

We believe you will find a color and performance factor to meet your needs within this offering. Fabrics were also selected to work together in a single color palette when you need to pair a screen or light filtering fabric with a blackout. This is helpful when using a double roller shade system or when a single room has a variety of shading requirements. All fabrics are suitable for any of our roller shade systems.

FABRIC IMAGES ARE A CLOSE REPRESENTATION, BUT FOR BEST RESULTS PLEASE EMAIL SALES@FORESTDH.COM TO ORDER A SWATCH CARD.



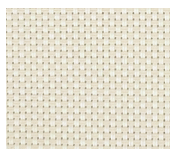
SCREENS

With two openness factors, 3% and 5%, our screen collection offers the ideal solution for all needs in terms of heat and/or light management. Screen fabrics are made of high quality polyester yarns for strength and durability.

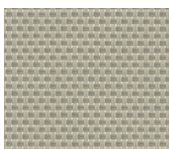
**118 IN. WIDE
FLAME RETARDANT**



**WHITE
74002-99**



**WHITE CREAM
74004-97**



**BEIGE CREAM
74020-81**



**WHITE GREY
74002-18**



**BLACK GREY
74003-55**



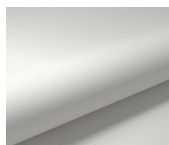
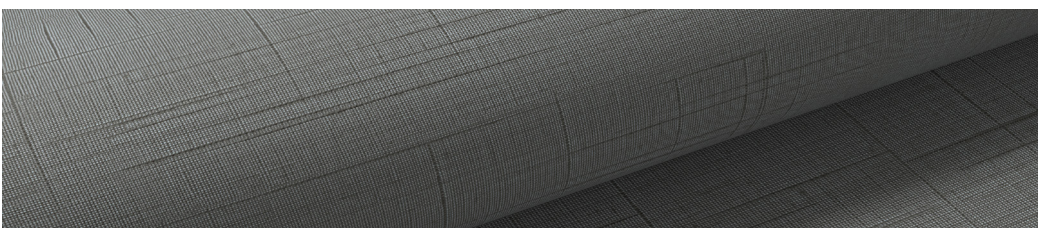
**BLACK
74002-59**



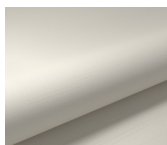
LIGHT FILTERING

Our light filtering collection offers transparent fabric that filters the light in a delicate way. The inspired fabric is available in a range of timeless colors.

**94 IN. WIDE
FLAME RETARDANT**



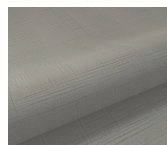
**WHITE
75001-04**



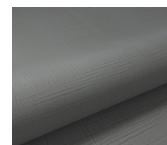
**CREAM
75001-16**



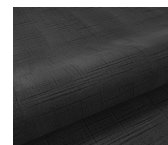
**SAND
75001-17**



**MIST
75001-18**



**SLATE
75001-19**



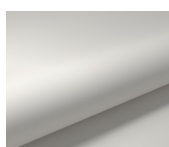
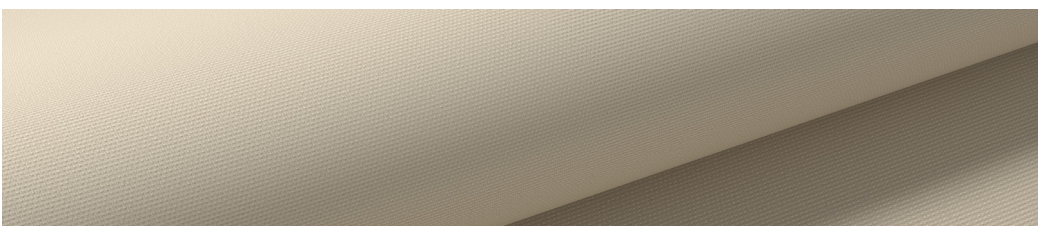
**BLACK
75001-20**



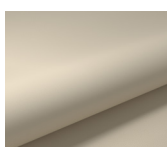
BLACKOUT

Our blackout fabric has a flocked backing which gives the back side of the fabric a soft textile appeal. With this fabric the room is completely darkened.

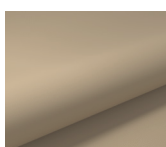
**110 IN. WIDE
FLAME RETARDANT**



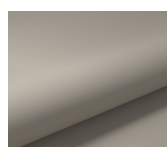
**WHITE
75002-04**



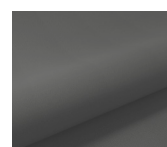
**CREAM
75002-16**



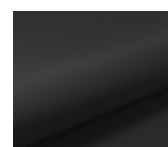
**SAND
75002-17**



**MIST
75002-18**



**SLATE
75002-19**



**BLACK
75002-20**

Forest specializes in the development, production and supply of highly innovative drapery tracks and window coverings. We offer track solutions catering to the hospitality industry. Whether you choose our motorized tracks or rods, shades or hand drawn rods your client will experience comfortable luxury and optimal ease of use.

THE WORLD BEHIND YOUR DRAPERIES

More than thirty years ago it started with a flexible aluminum system, known as the Forest KS® system. The product line was expanded at a rapid pace, always focusing on functionality and quality. The technologies conquered the world. Hotels across the globe are satisfied users of Forest systems including iconic hotels like the Venetian, Hardrock and the mega hotels in Dubai.

Forest Group B.V. sells its products in more than 100 countries worldwide and has sales offices in The Netherlands, the United States, China, United Arab Emirates, United Kingdom and Poland, ensuring global availability.

Some well-known and recognized features of the Forest track systems are:

- **High-quality standards:** We guarantee a long lifespan.
- **Comfort and quiet:** Drapes open and close silently, creating a serene and comfortable environment.
- **Adds style to windows:** Always perfectly hanging drapery thanks to our systems, including motorized solutions.
- **Smart integration:** Controllable via app, voice, and home automation systems for ultimate convenience.
- **Sustainability:** We use a minimum of 75% recycled aluminum in our tracks.
- **Unique warranty:** 10-year warranty.



Drapery engineering by Forest